

LAS CIENCIAS NATURALES EN EL ANTIGUO
INSTITUTO DE SEGOVIA

LAS COLECCIONES BIOLÓGICAS

Volumen IV

Las colecciones osteológicas y de preparaciones
microscópicas



Carlos del Barrio Herrero

Carlos del Barrio Herrero

LAS CIENCIAS NATURALES EN EL
ANTIGUO INSTITUTO DE SEGOVIA

LAS COLECCIONES BIOLÓGICAS

Volumen IV

Las colecciones osteológicas y de
preparaciones microscópicas

2024

n.º reg. Prop. Int:

**LAS
COLECCIONES
OSTEOLÓGICAS**

Las colecciones osteológicas

En la primera memoria, del curso 1859/60, se notificaba ya la existencia de cuatro esqueletos de las cuatro clases del tipo vertebrados. Y en el curso 1968/69 se compró un esqueleto humano. Más tarde, en la memoria del curso 1877/78 aparecen reseñados los objetos anteriores: un esqueleto humano, un esqueleto de mamífero (ardilla), un esqueleto de ave (aguilucho), un esqueleto de reptil (culebra) y un esqueleto de pez (Carpa). En el curso 1880/81 se hacen nuevas compras de esqueletos: una tortuga mora (*Testudo graeca*), un topo común (*Talpa europea*), y una rana japonesa (*Rana japonica*). Al curso siguiente se compró un cráneo humano desarticulado, otro serrado verticalmente, y otro serrado horizontalmente.

Ya en el siglo XX, en el curso 1916/17 se compró un esqueleto humano de un adulto. Y en el inventario de 1928 una entrada registra “Tres cráneos de Judeos-Sefardies, bastante deteriorados, de la necrópolis de la Cuesta de los Hoyos (Segovia)”. Estos cráneos junto con un notable número de huesos están actualmente guardados en una caja de cartón antigua. Una parte parece

proceder de la mencionada necrópolis de la Cuesta de los Hoyos, y el resto, por marcas que presentan, podrían proceder de modelos de esqueleto montados para su exposición. Más tarde, en el inventario de 1947 se cita un “esqueleto de serpiente, y 11 calaveras humanas, alguna seccionada y otras en mal estado”. Y en el de 1987 sólo se contabiliza un esqueleto de ave, si bien este inventario solo recoge lo que había en el laboratorio de Ciencias Naturales.

IES Mariano Quintanilla



Halcón peregrino. Comprado antes de 1869.
Dimensiones: 20 x 13 x 31 cm



Esqueleto de una tortuga. Comprado en el curso
1881/82. Vista exterior e interior.
Dimensiones:15,5 x 8,5 x 21 cm





Dimensiones: 49 x 16 x 31 cm



Dimensiones: 13 x 8,5 x 5,5 cm



Dimensiones: 17 x 10 x 7 cm



Dimensiones: 20 x 11 x 8 cm



Dimensiones: 23 x 11,5 x 9 cm



Dimensiones: 20 x 10 x 9 cm



Dimensiones: 15,5 x 1,5 x 8 cm



Dimensiones: 16 x 0,8 x 8 cm



Dimensiones: 15,5 x 1 x 8,5 cm



Dimensiones: 19 x 1,2 x 11 cm



Dimensiones: 23 x 16 x 2,5 cm



¿Es el que se compró en el curso 1868/69, o el del 1916/17, o el que se dice en el inventario de 1928 que procede de la Escuela Normal?
Dimensiones: 34 x 19 x 155 cm



Comprado en el curso 1881/82. Dimensiones: 17 x 12 16
cm



Dimensiones: 14 x 16 x 15 cm



Dimensiones: 1,1 x 1,2 x 1,7 cm



Dimensiones: 9 x 6,4 x 4,4 cm



Dimensiones: 15 x 7 x 2,6 cm



Dimensiones: 8,5 x 5,5 x 5,8 cm



Dimensiones: 7 x 4 x 7 cm



Dimensiones: 5,2 x 3 x 0,3 cm



Dimensiones: 23 x 9,5 x 10,7 cm

Caja de los huesos



Dimensiones: 47 x 42 x 31,3 cm



Dimensiones: 14 x 17,5 x 15 cm



Dimensiones: 1,7 x 0,8 x 0,6 cm



Registrado en el inventario de 1928. Escrito sobre el cráneo: Sefardita. Dimensiones: 13 x 14,5 x 18 cm



Dimensiones: 11,3 x 11 x 5,5 cm



Tiene escrito algo en la parte izquierda.

Dimensiones: 15 x 17,5 x 16 cm



Detalle de lo escrito



Dimensiones: 12,5 x 17 x 13,5 cm



Dimensiones: 11 x 10 x 5,5 cm



Dimensiones: 10 x 9 x 5,5 cm



Dimensiones: 10 x 11 x 5,3 cm



Dimensiones: 9,6 x 9 x 4,5 cm



Dimensiones: 11,5 x 12 x 6 cm



Dimensiones: 9,5 x 10 x 5,8 cm



Dimensiones: 5,4 x 5 x 6,5 cm



Dimensiones: 5,3 x 5 x 6,3 cm



Escrito sobre el hueso: Sefardita.
Dimensiones: 33,5 x 8 x 6,5 cm



Escrito sobre el hueso: Sefardita.
Dimensiones: 40 x 9 x 6 cm



Dimensiones: 16 x 1,5 x 0,7 cm



Escrito sobre el hueso: Sefardita.

Dimensiones: 40 x 9 x 6 cm



Escrito sobre el hueso: Sefardita.
Dimensiones: 41 x 9 x 7 cm



Escrito sobre el hueso: Sefardita.
Dimensiones: 34 x 7,5 x 5 cm



Escrito sobre el hueso: Sefardita.
Dimensiones: 29 x 6 x 4,5 cm



Dimensiones: 34 x 3 x 2,5 cm



Dimensiones: 33 x 7 x 6 cm



Dimensiones: 33,5 x 3 x 2,5 cm



Dimensiones: 31,2 x 2,5 x 2 cm



Dimensiones: 21,5 x 3 x 2 cm



Dimensiones: 9 x 0,8 x 0,4 cm



Dimensiones: 13 x 2,5 x 1 cm



Dimensiones: 10 x 0,7 x 0,6 cm



Dimensiones: 11,2 x 2,5 x 1,8 cm



Dimensiones: 6,3 x 6 x 5 cm



Dimensiones: 5 x 4 x 1,8 cm



Dimensiones: 7,2 x 4 x 2,3 cm



Dimensiones: 5,5 x 4,5 x 2 cm



Dimensiones: 11,5 x 13 x 5 cm



Dimensiones: 4 x 1,6 x 3,2 cm



Hueso de un animal. Dimensiones: 8,5 x 4 x 3,5 cm

Huesos humanos que estaban en la caja y que pueden ser reproducciones



Dimensiones: 24 x 4 x 2,5 cm



Dimensiones: 4,5 x 1,7 x 0,9 cm



Dimensiones: 22 x 17 x 11 cm



Dimensiones: 18 x 14 x 7 cm



Dimensiones: 18 x 12,5 x 7 5 cm



Dimensiones: 43 x 8 x 6,5 cm



Dimensiones: 35 x 8 x 5,5 cm



Dimensiones: 32 x 6 x 4,5 cm



Dimensiones: 35 x 3 x 2 cm



Dimensiones: 25,5 x 3,5 x 2,6 cm



Dimensiones: 22,5x 1,5 x 0,8 cm



Dimensiones: 22 x 1,6 x 1 cm



Dimensiones: 18 x 1,4 x 0,6 cm



Dimensiones: 16 x 1,5 x 0,5 cm



Dimensiones: 19 x 1,2 x 0,7 cm



Dimensiones: 21 x 1,5 x 0,7 cm



Dimensiones: 17,5 x 1,3 x 0,6 cm



Dimensiones: 16 x 1,5 x 1,4 cm



Dimensiones: 18 x 1,7 x 0,8 cm



Dimensiones: 18,5 x 1,5 x 1 cm



Dimensiones: 17 x 1,5 x 0,3 cm



Dimensiones: 22,5 x 1,5 x 1 cm



Dimensiones: 21,8 x 1,6 x 1 cm



Dimensiones: 16 x 1,6 x 1,5 cm



Dimensiones: 15,5 x 1,2 x 0,5 cm



Dimensiones: 20,5 x 1,8 x 0,7 cm



Dimensiones: 13 x 1,7 x 0,7 cm



Dimensiones: 13,2 x 1,7 x 0,5 cm



Dimensiones: 10,5 x 1 x 0,7 cm



Dimensiones: 21 x 1,8 x 0,8 cm



Dimensiones: 12,3 x 1 x 0,6 cm



Dimensiones: 15,7 x 3 x 1,2 cm



Dimensiones: 7,4 x 2,1 x 1,6 cm el más grande



Dimensiones: 7 x 5,5 x 1 cm



Dimensiones: 7,2 x 5,5 x 0,8 cm



Dimensiones: 9 x 7,5 x 4 cm



Dimensiones: 10 x 8 x 4,5 cm



Dimensiones: 6,7 x 6,3 x 3,5 cm



Dimensiones: 6 x 7 x 4,5 cm



Dimensiones: 7,2 x 8 x 4 cm



Dimensiones: 6,2 x 7 x 4,5 cm



Dimensiones: 6,5 x 7 x 6 cm



Dimensiones: 5 x 4,5 x 2 cm



Dimensiones: 5,8 x 5,5 x 2 cm



Dimensiones: 7,5 x 4,5 x 4,5 cm



Dimensiones: 8,5 x 6,5 x 4,5 cm



Dimensiones: 4 x 3,2 x 3,5 cm

Cajita dentro de la caja de los huesos



Dimensiones: 6,2 x 3 x 2,4 cm y 5 x 1 x 1 cm el más grande



Dimensiones: 6,2 x 1,5 x 0,7 cm el más grande



Dimensiones: 4 x 4,2 x 1,7 el más grande

Huesos humanos que pueden ser reproducciones



Dimensiones: 7 x 2,3 x 1 cm el más grande



Dimensiones: 5,5 x 1,4 x 1,2 cm el más grande



Dimensiones: 4,4 x 1,4 x 1,2 cm el más grande



Dimensiones: 3,2 x 2 x 1,7 cm el más grande



Dimensiones: 3,1 x 1,4 x 0,8 cm el más grande



Dimensiones: 25 x 2 x 1,8 cm el más grande



Dimensiones: 1,6 x 1,2 x 0,6 cm el más grande



Dimensiones: 5,5 x 4,2 x 3,5 cm el más grande



Dimensiones: 4,7 x 4,1 x 2 cm el más grande



Cráneo que se encuentra en la caja 31 del grupo Calderón. Dimensiones: 17,5 x 14 x 7,7 cm

Caja de madera



Dimensiones: 11,5 x 10 x 4,8 cm



Dimensiones: 12 x 10 x 5,1 cm



Parte del cráneo desarticulado. Comprado en el curso
1881/82. Dimensiones: 4,4 x 2,7 x 2 cm



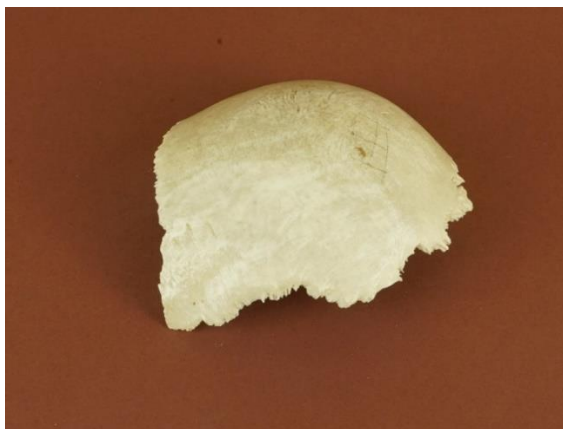
Parte del cráneo desarticulado. Comprado en el curso
1881/82. Dimensiones: 10,6 x 5,2 x 4,5 cm



Parte del cráneo desarticulado. Comprado en el curso
1881/82. Dimensiones: 11 x 10,7 x 6 cm



Parte del cráneo desarticulado. Comprado en el curso
1881/82. Dimensiones: 13 x 12 x 5,5 cm



Parte del cráneo desarticulado. Comprado en el curso
1881/82. Dimensiones: 13x 11,7 x 5 cm



Parte del cráneo desarticulado. Comprado en el curso
1881/82. Dimensiones: 11,2 x 9,6 x 5 cm



Dimensiones: 6 x 4,3 x 8 cm



Dimensiones: 4,5 x 4 x 6,2 cm



Dimensiones: 8 x 6 x 4 cm



Dimensiones: 8,2 x 6,2 x 5,1 cm



Dimensiones: 7,6 x 6 x 4,5 cm



Dimensiones: 8 x 7 x 4,2 cm



Dimensiones: 7,2 x 2,4 x 1,6 cm

Huesos humanos que pueden ser reproducciones



Dimensiones: 9 x 8,3 x 5 cm



Dimensiones: 6,5 x 5,5 x 6,4 cm



Dimensiones: 7,5 x 5 x 4,3 cm



Dimensiones: 6,5 x 6 x 5,3 cm



Dimensiones: 6,5 x 6 x 3 cm



Dimensiones: 6 x 4,5 x 2 cm



Dimensiones: 5,8 x 5,5 x 3,2 cm

IES Andrés Laguna



Dimensiones: 27 x 11 x 11 cm



Dimensiones: 40 x 2,5 x 25 cm



Dimensiones: 35 x 2 x 22 cm



Dimensiones: 33 x 15 x 13 cm



Dimensiones: 19 x 13 x 17 cm



Dimensiones: 13 x 8 x 5 cm



Dimensiones: 10 x 5,5 x 5 cm



Comprado en el curso 1881/82.
Dimensiones: 18 x 16 x 17 cm



Dimensiones: 17 x 14 x 13 cm



Dimensiones: 10 x 8 x 5 cm



Dimensiones: 17 x 10 x 10 cm



Dimensiones: 4 x 3 x 3 cm cada una

**LAS
COLECCIONES DE
PREPARACIONES
MICROSCÓPICAS**

Las colecciones micrográficas

Las primeras referencias a la compra de preparaciones para el microscopio aparecen en la memoria del curso 1882/83, donde se dice que se compran 100 preparaciones microscópicas de histología animal y vegetal.

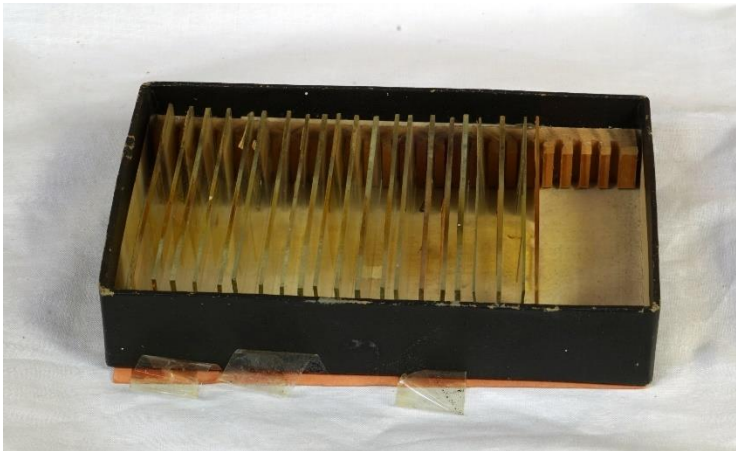
La siguiente referencia la encontramos ya en el siglo XX, en el inventario de 1928, en el que se reseñan cincuenta preparaciones micrográficas de Histología humana. Y en el de 1947 se habla de seis cajas para preparaciones microscópicas, vacías, y cinco cajitas con preparaciones de biología vegetal, con un total de unas 190 preparaciones.

Años más tarde, en el curso 1958/59 encontramos la compra de 22 preparaciones de tejidos animales y 25 preparaciones de botánica general, y en el siguiente, 25 preparaciones de tejidos animales y otras 25 preparaciones de botánica general.

En el último cuarto del siglo XX, llegaron algunas colecciones más de micrografía, que todavía están en uso, aunque cada vez de forma más esporádica.

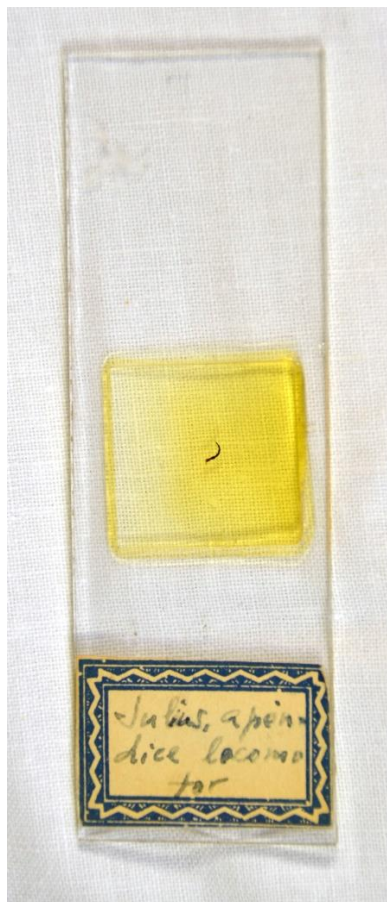
IES Mariano Quintanilla

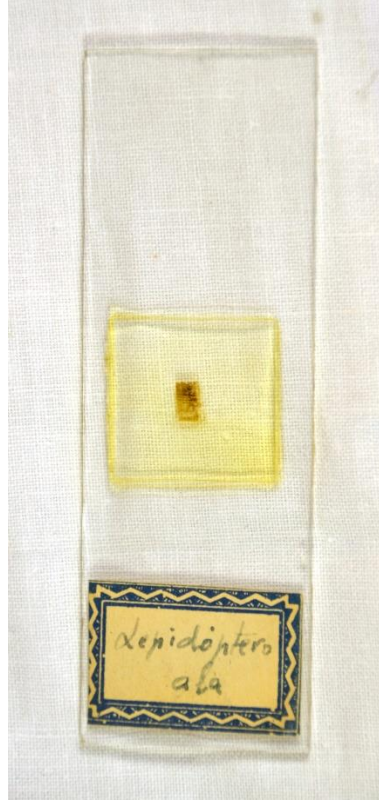
Caja 1

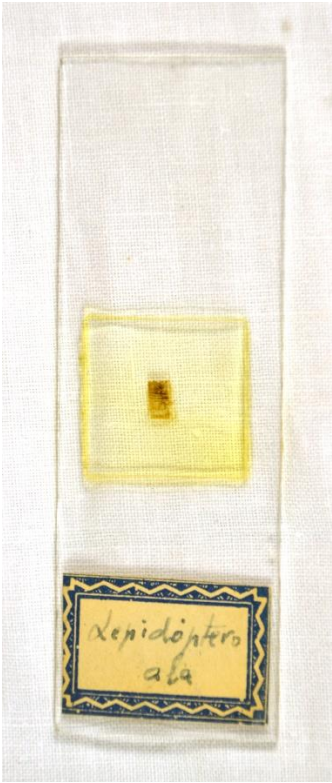


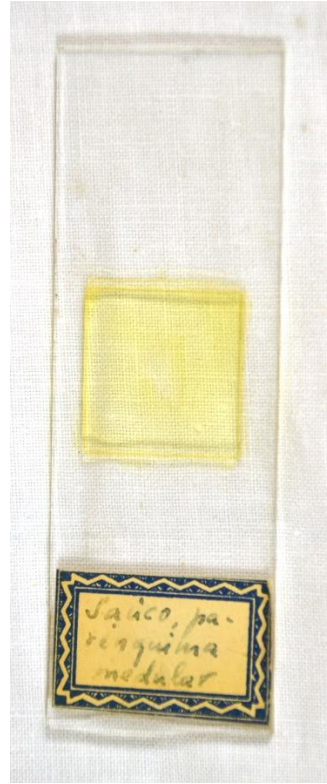
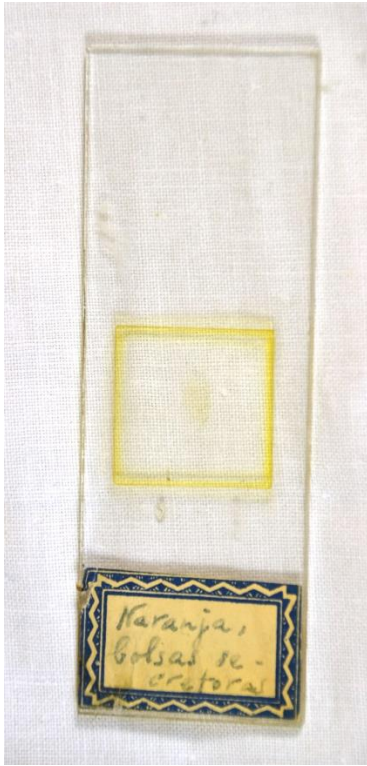
Dimensiones: 15,5 x 9,5 cm

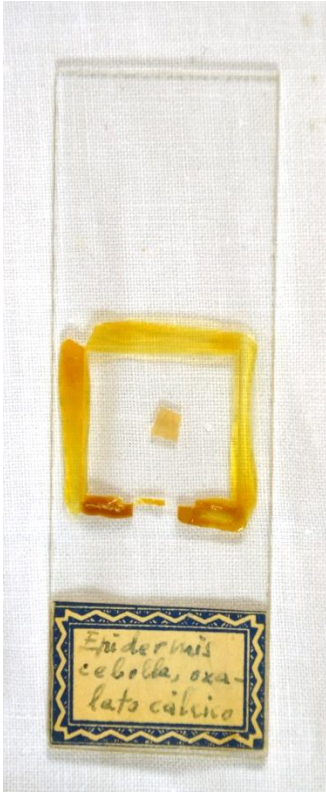
Los portaobjetos tienen unas dimensiones de 7,5 x 2,6 cm.

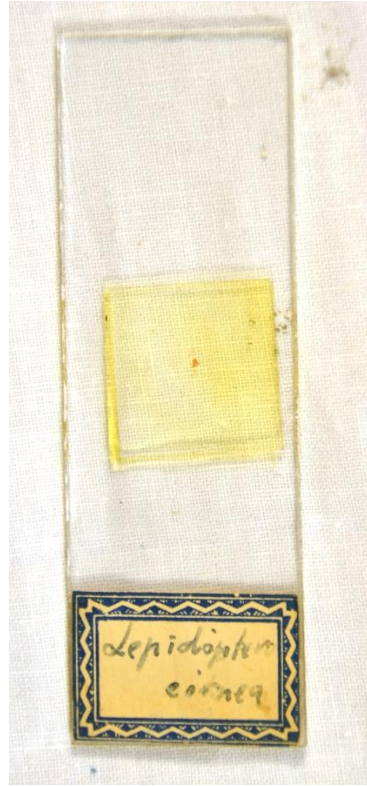
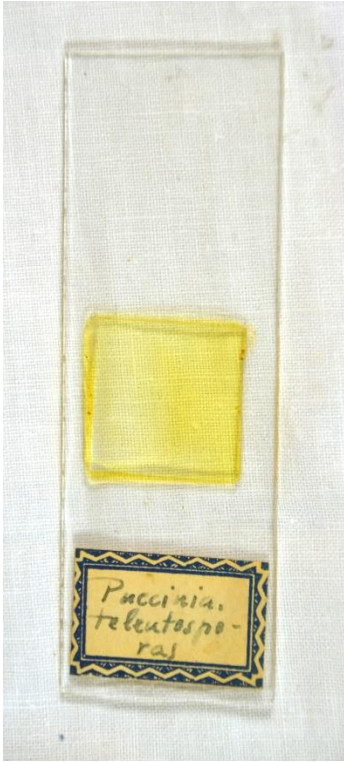




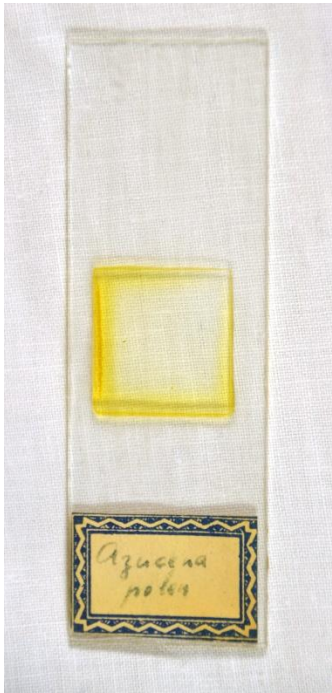




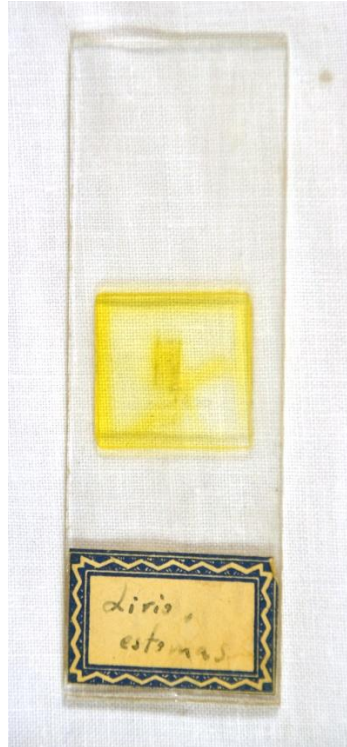
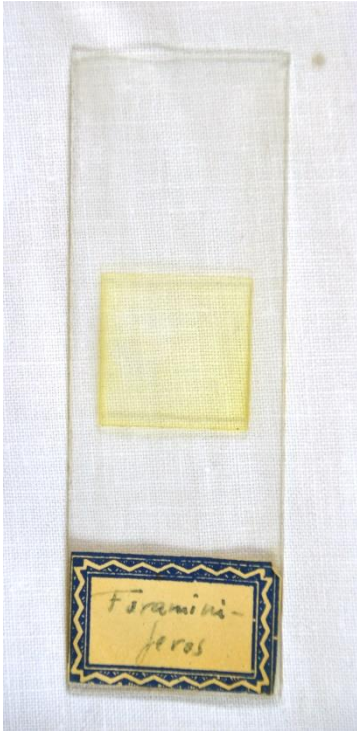


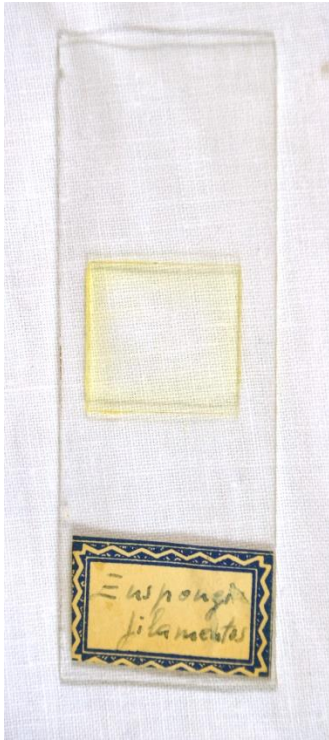












Caja 2

Los portaobjetos tienen unas dimensiones de 5,9 x
1,7 cm





Caja 3



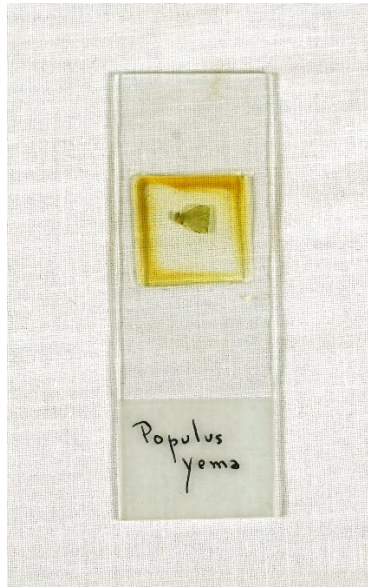
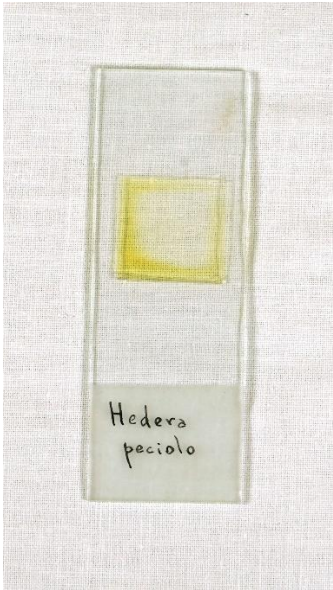
Dimensiones: 19 x 15,5 cm

Los portaobjetos tienen unas dimensiones de 7,5 x 2,5 cm, salvo los que se indique expresamente sus medidas



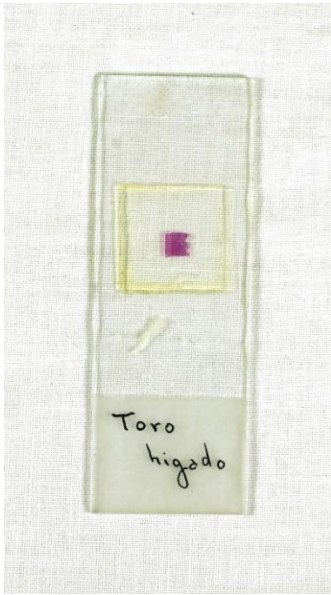
Dimensiones: 6 x 1,6 cm

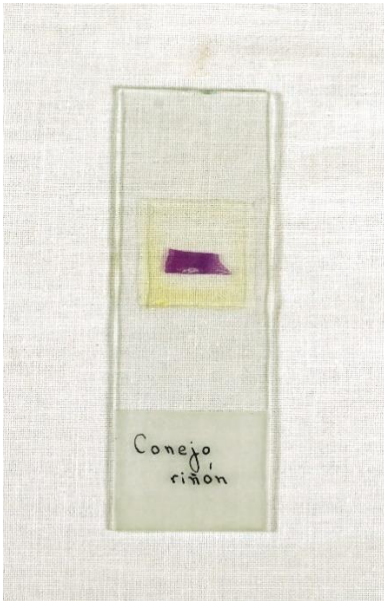




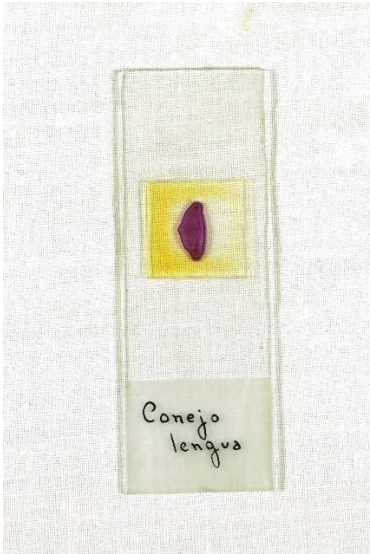


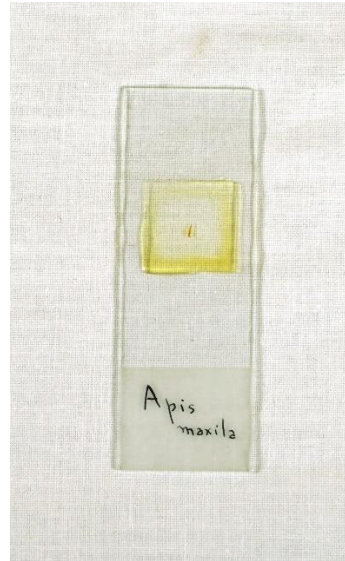
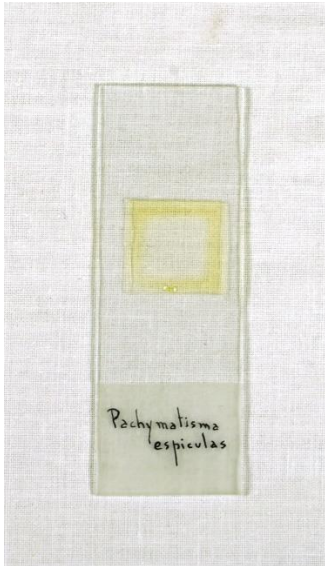


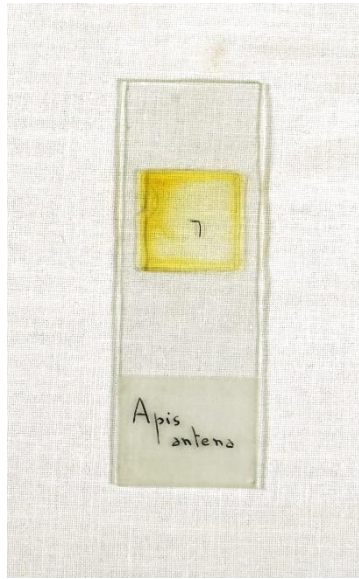




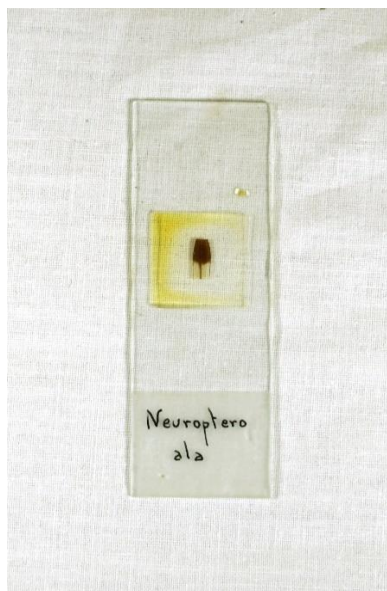


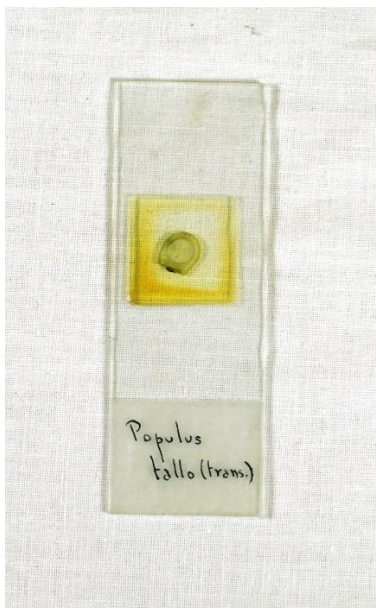


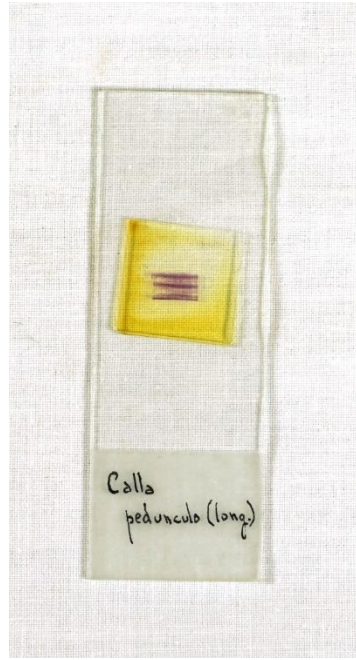
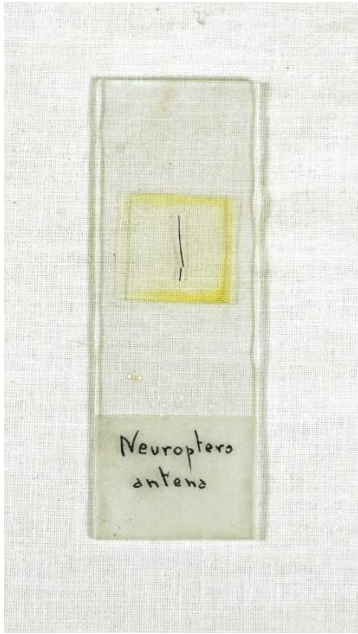




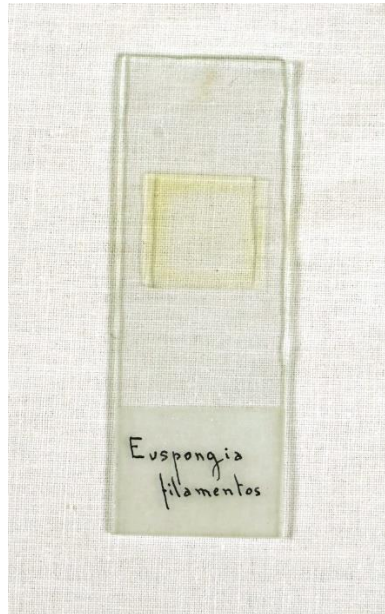
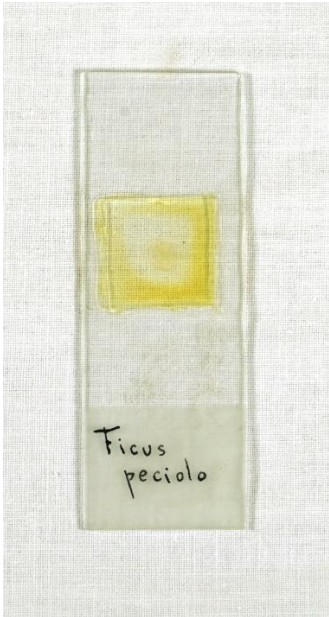


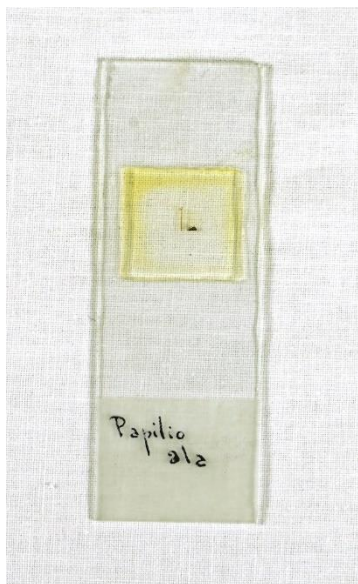


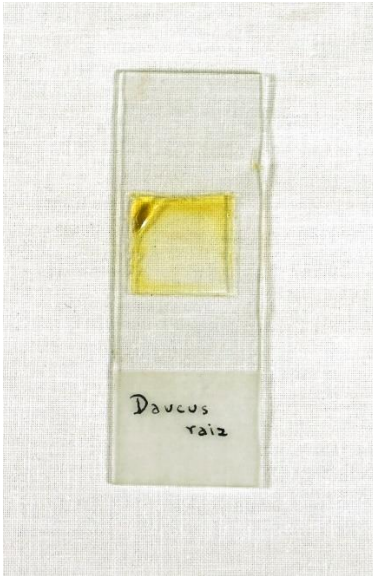


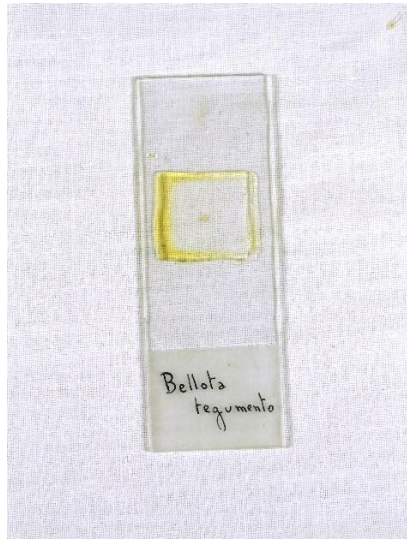
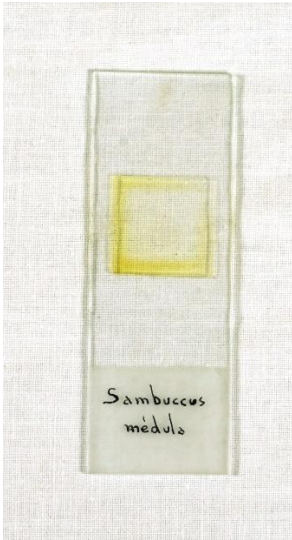






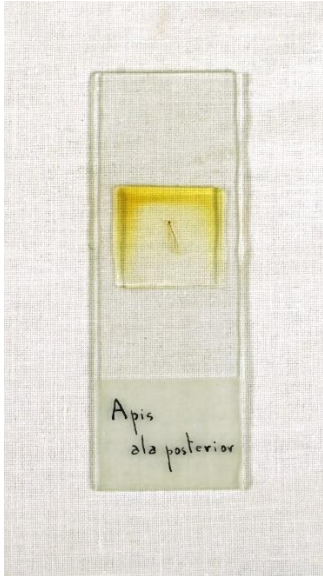


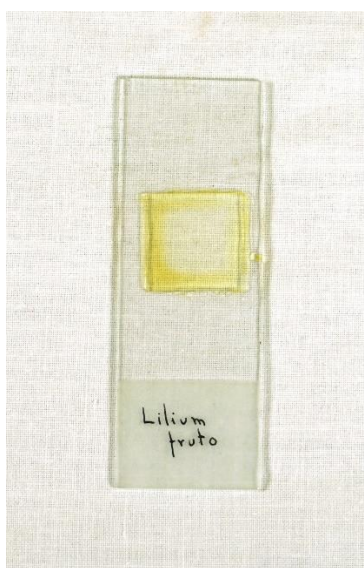


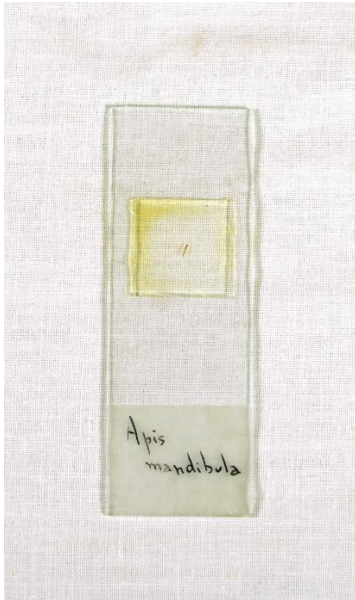


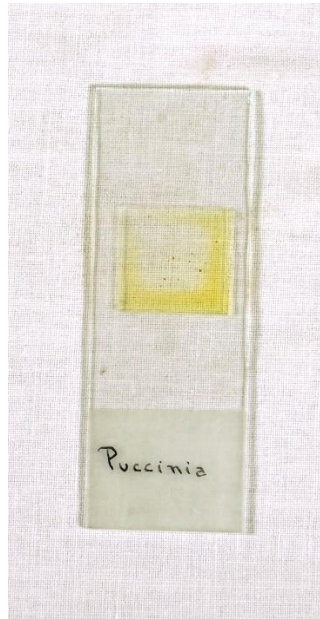
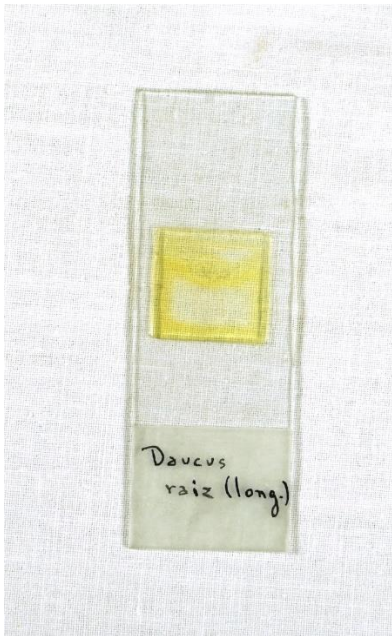














Laboratorio de Ciencias Naturales

Se muestra lo más representativo de los que está todavía en uso. Por lo general, las colecciones aparecen mezcladas en las distintas cajas.

Bandejas



19 x 11 x 3 cm

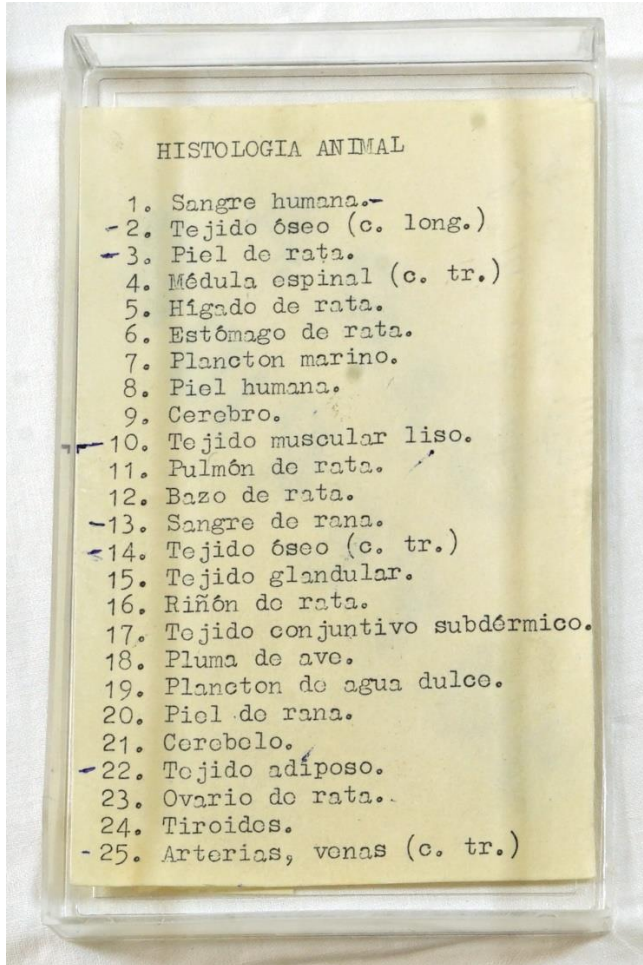


19 x 11 x 3 cm



19 x 11 x 3 cm

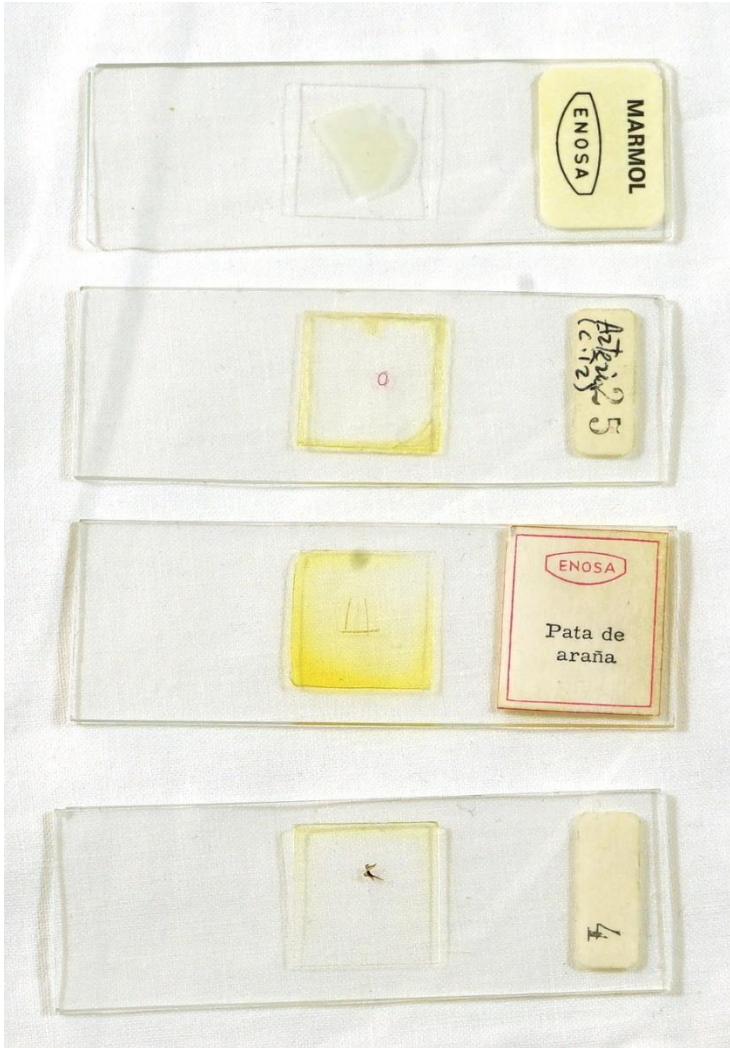
Caja 1



8 x 13,5 x 3 cm



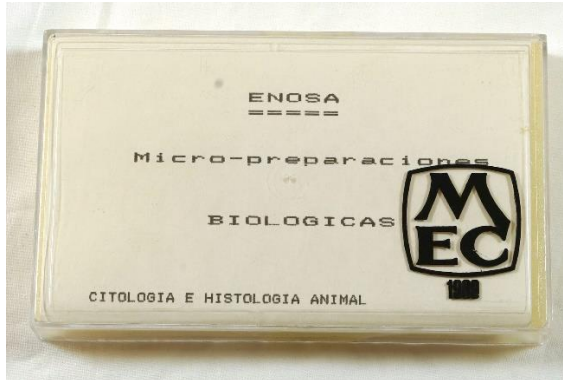
7,6 x 2,7 cm cada uno



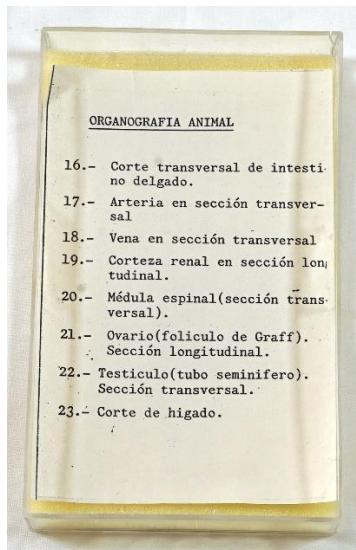




Caja 2



Ministerio de Educación y Ciencia 1989. 13,5 x 8 x 3 cm



Caja 3

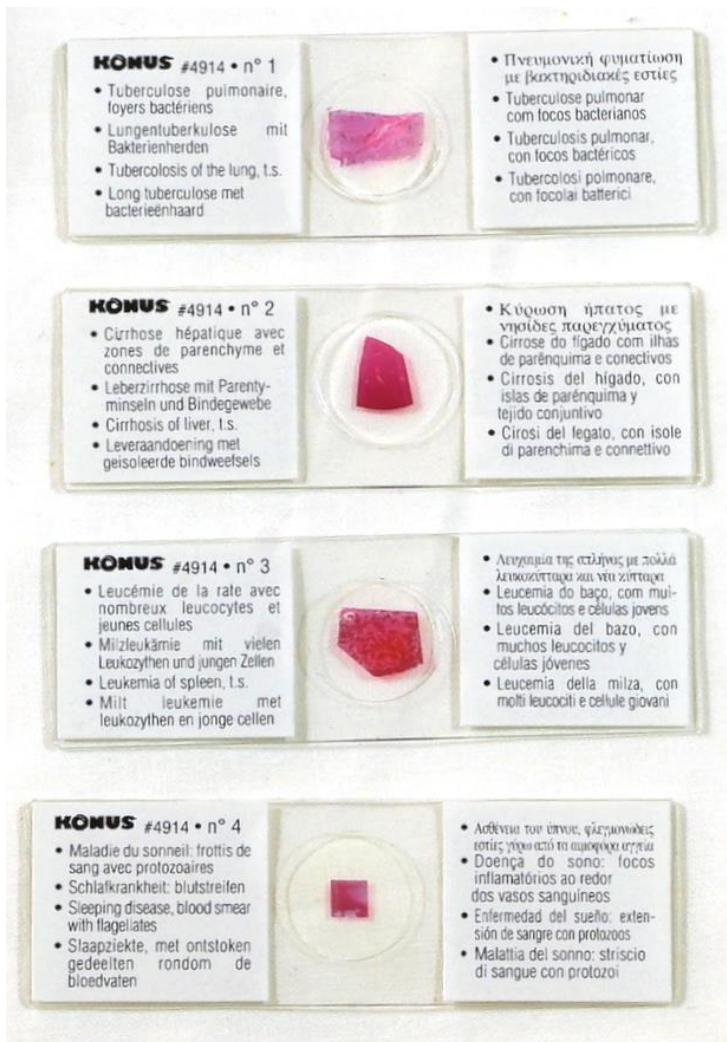


Ministerio de Educación y Ciencia 1989. 13,5 x 8 x 3 cm

Caja 4



10 x 8 x 3 cm



7,7 x 2,7 cm cada uno

KONUS #4914 • n° 5

- Pneumonie: foyers d'inflammation autour des vaisseaux sanguins
- Lungen entzündung: entzündung merde um die blutgefäße
- Inflammation of the lungs, t.s. with inflammation cells around the vessels
- Besmettingshaarden van de ontstekingen rondom de bloedvaten



- Πνευμονία: φλογοπνοές εστίες γύρω από τα αιμοφόρα αγγεία
- Pulmonite: focos inflamatórios em torno dos vasos sanguíneos.
- Pulmonia: focos inflamatorios alrededor de los vasos sanguíneos
- Polmonite: focolai infiammatori attorno ai vasi sanguigni

KONUS #4914 • n° 6

- Rate dans un cas de paludisme
- Milz bei einem Fall von Malaria
- Malaria melanemia of spleen, t.s.
- Milt, in geval van malaria



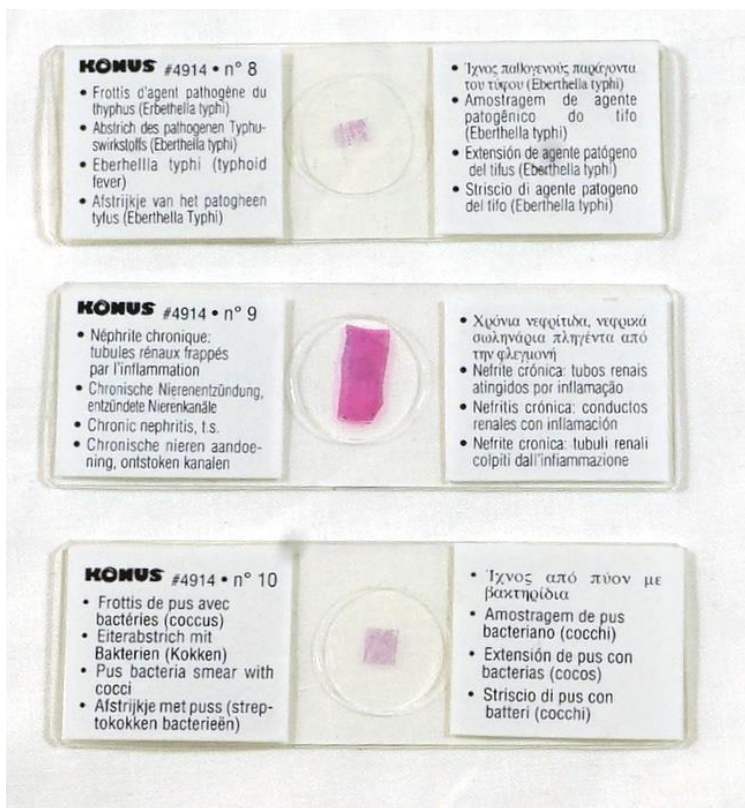
- Σπλήνα σε μια περίπτωση ελονοσίας
- Baço em um caso de malária
- Bazo con un caso de malaria
- Milza in un caso di malaria

KONUS #4914 • n° 7

- Cicatrice de la peau
- Narbe der Haut
- Malaria melanemia of spleen, t.s.
- Huid met litteken



- Σπλήνα σε μια περίπτωση ελονοσίας
- Baço em um caso de malária
- Cicatriz de la piel
- Cicatrice della pelle

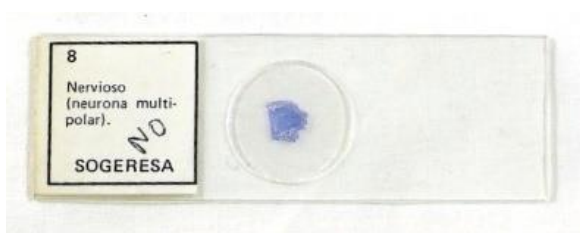


Caja 5



10 x 8 x 3 cm

Caja 6



7,6 x 2,6 cm

Caja 7



13,5 x 8,5 x 3 cm

Caja 8



13,5 x 8,5 x 3 cm

Caja 9



13,5 x 8,5 x 3 cm

Caja 10



13,5 x 8,5 x 3 cm

Caja 11



13,5 x 8,5 x 3 cm

IES Andrés Laguna

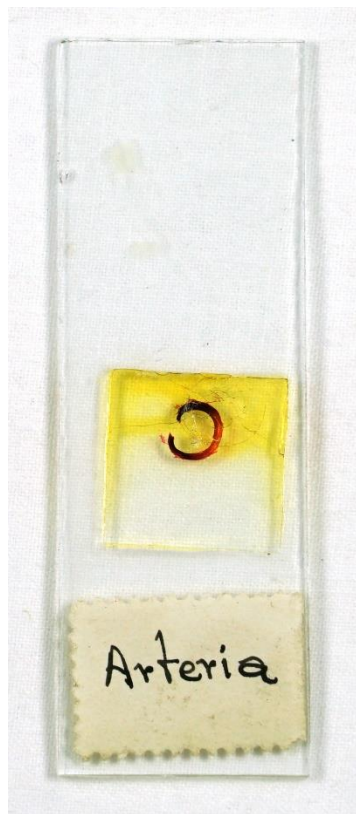
Cajón 3 D del armario de fósiles y conchas

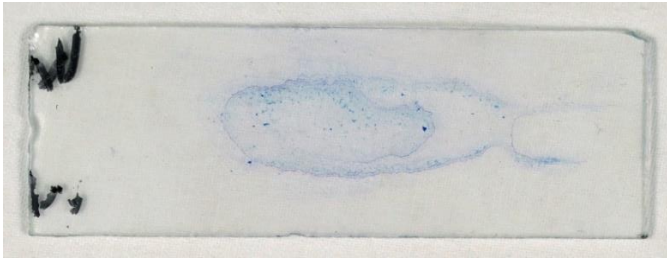
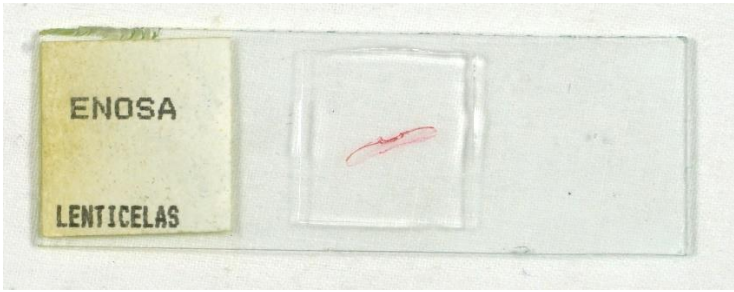
Caja 1

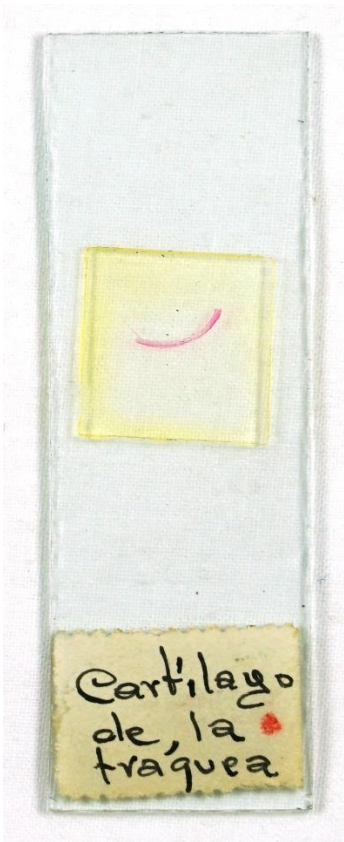


Dimensiones: 15,7 x 8,3 x 3,7 cm

Los portaobjetos tienen unas dimensiones
de 7,5 x 2,5 cm.







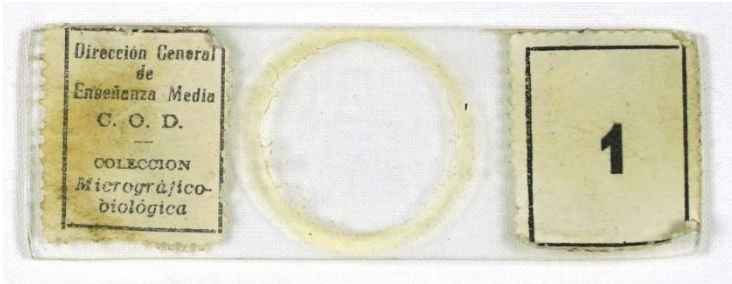


Caja 2



Dirección General de Enseñanza Media.
Colección micrográfica de Biología. Dimensiones: 23 x
35 cm.

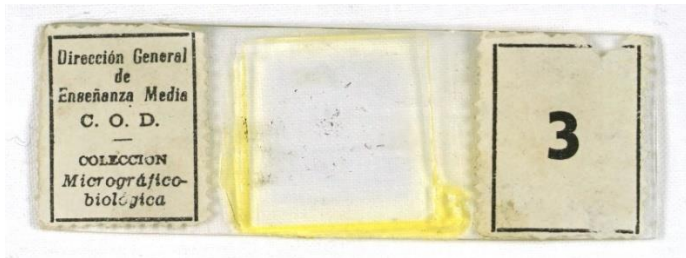
Los portaobjetos tienen unas dimensiones de 7,5
x 2,7 cm



Fitoplancton marino



Zooplancton marino



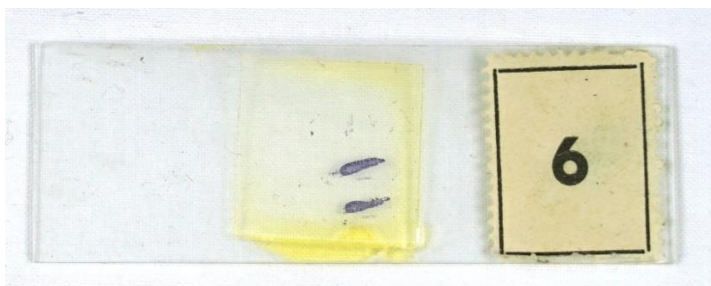
Liquen



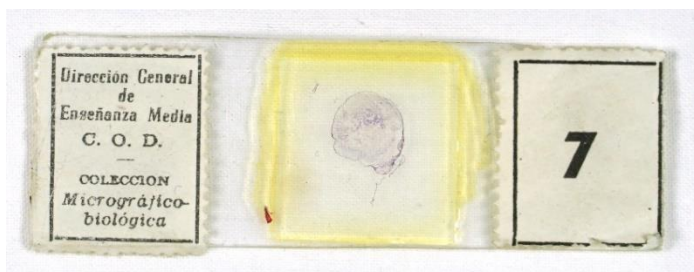
Colonia de Aglazonia



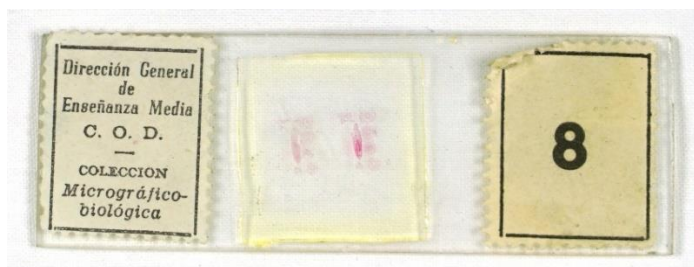
Ovario de rana



Testículo de rana



Testículo de rata



Raíz de Populus



Raíz de maíz



Tallo de tomate



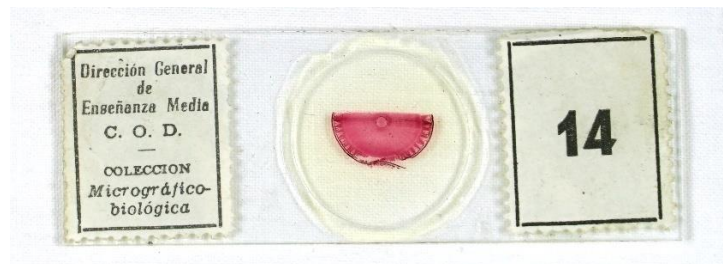
Tallo de junco



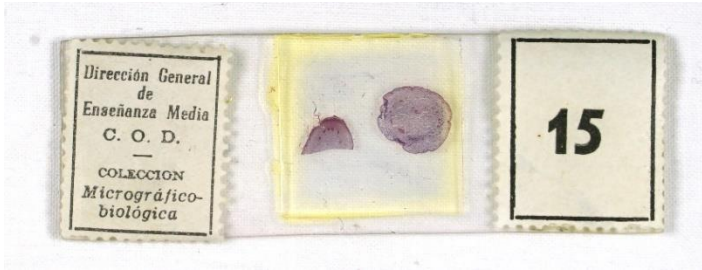
Tallo de juncia



Tallo de tilo (Trans.)



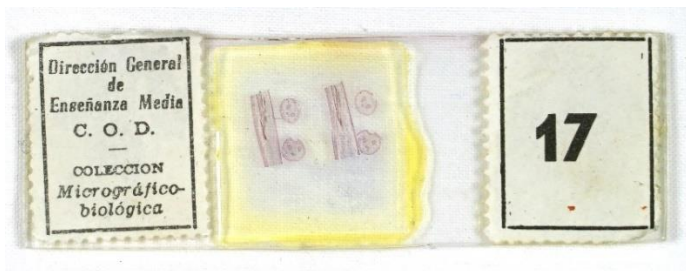
Tallo de tilo, de dos años



Rizoma de helecho



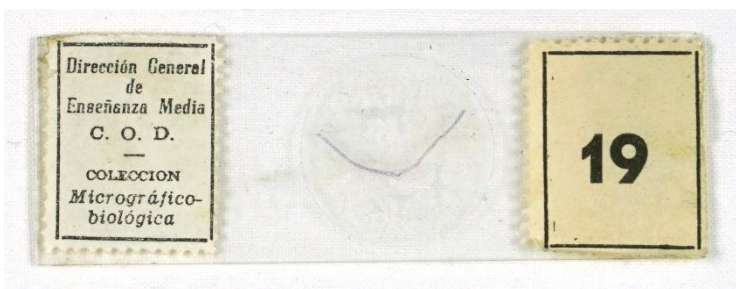
Pecíolo de calabaza



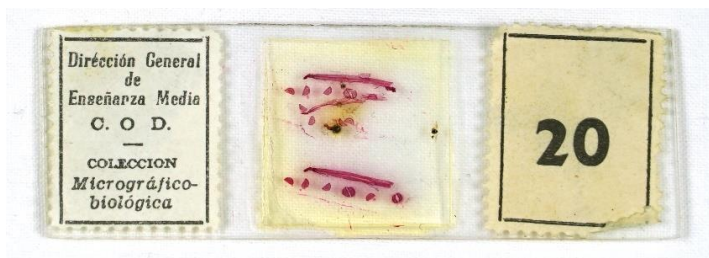
Pecíolo de helecho



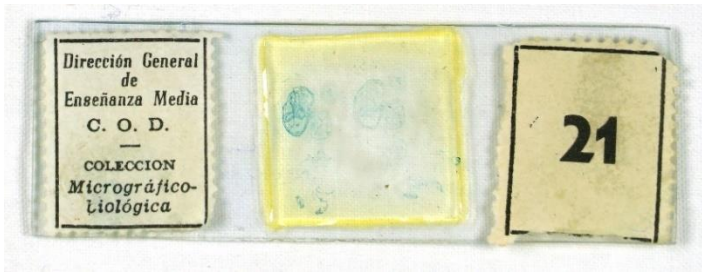
Hoja de tradescancia



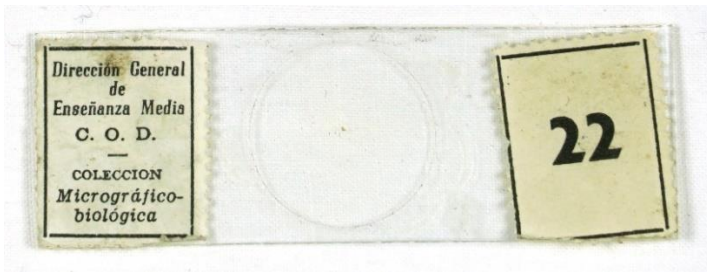
Hoja de adelfa



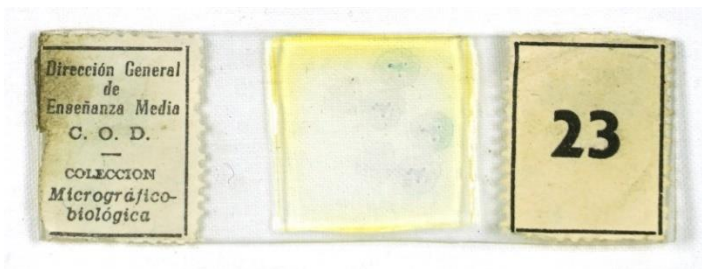
Hoja de pino



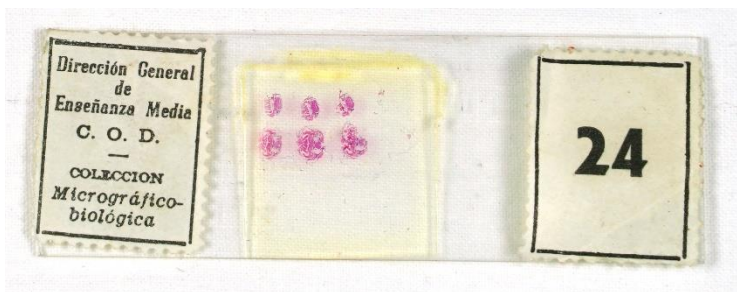
Flor de lirio



Polen



Ovario de lirio



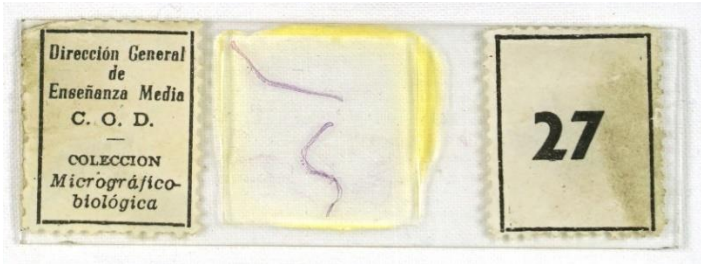
Cabeza de gambusia



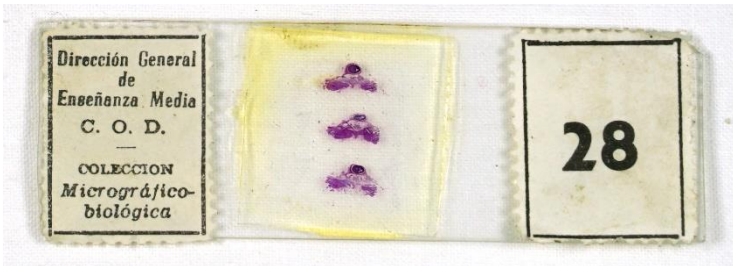
Cuerpo de gambusia



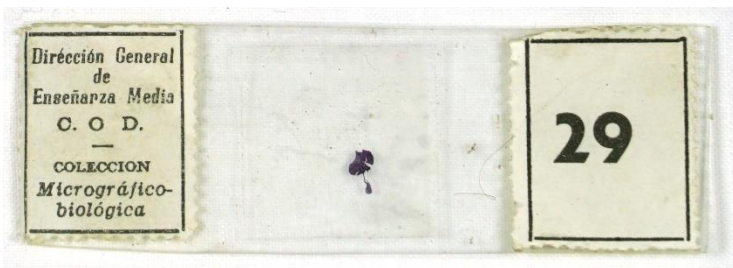
Piel de rata



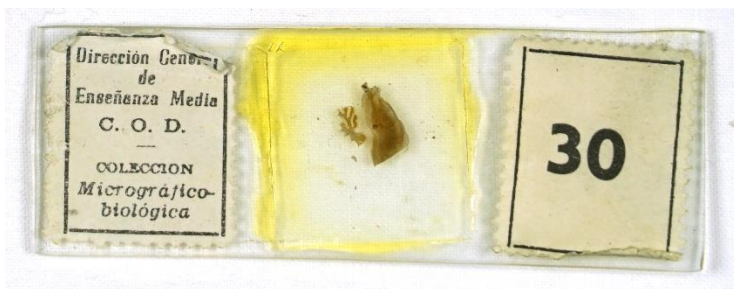
Oreja de rata



Columna vertebral



Medula espinal



Cerebelo



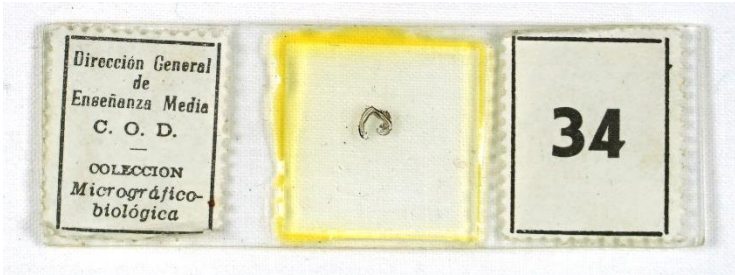
Base del encéfalo



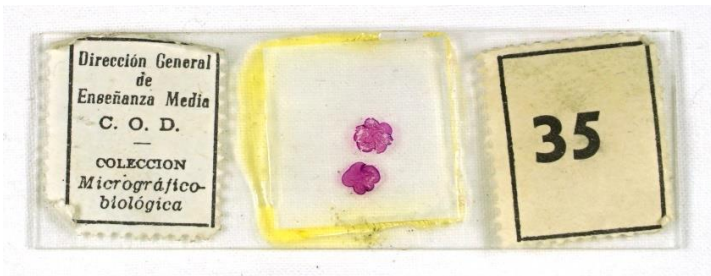
Astas de amnón



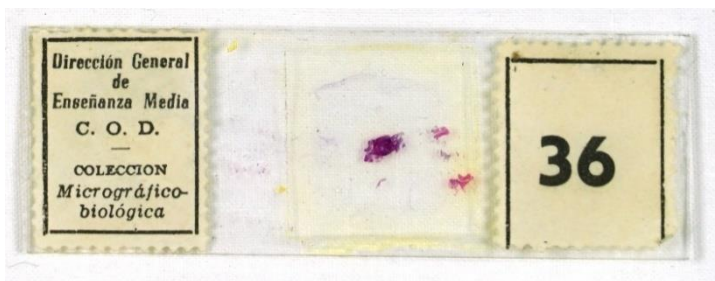
Cerebro



Retina



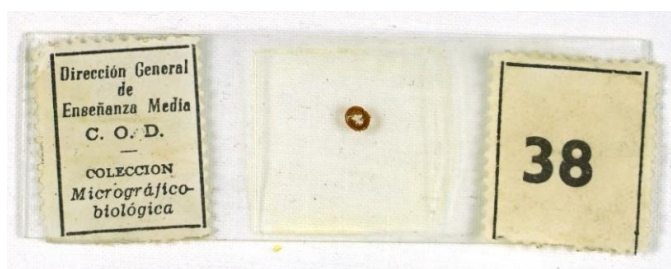
Lengua



Mandíbula de rata



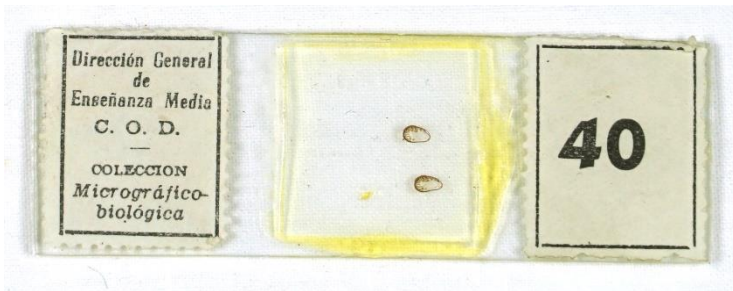
Estómago



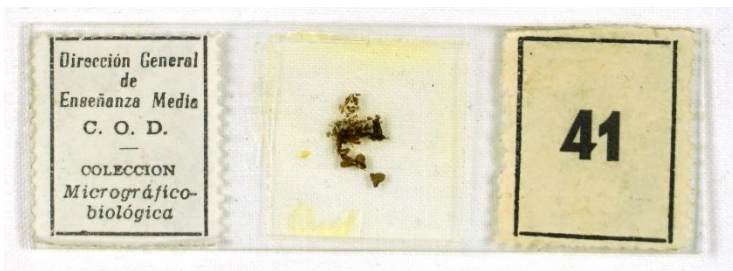
Intestino delgado (Plata)



Intestino delgado (Hematoxilina)



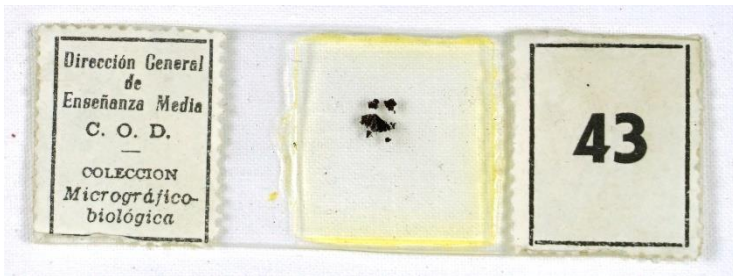
Intestino delgado (Formol Urano)



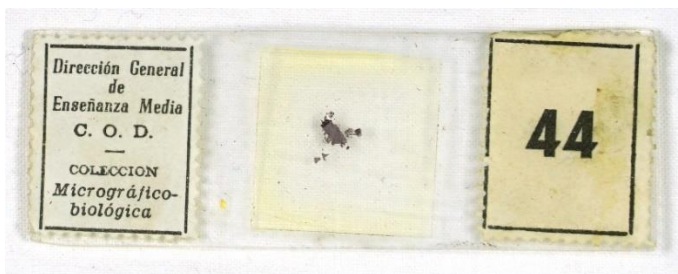
Intestino grueso



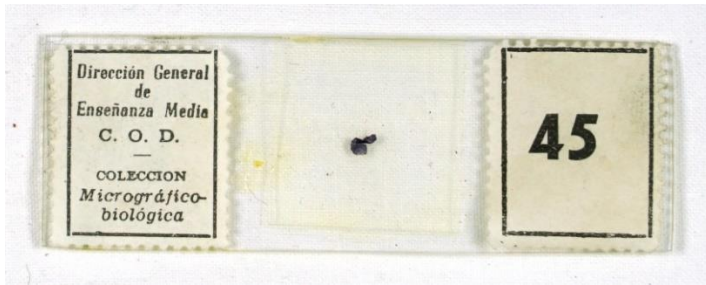
Hígado



Hígado (Plata)



Riñón



Timo



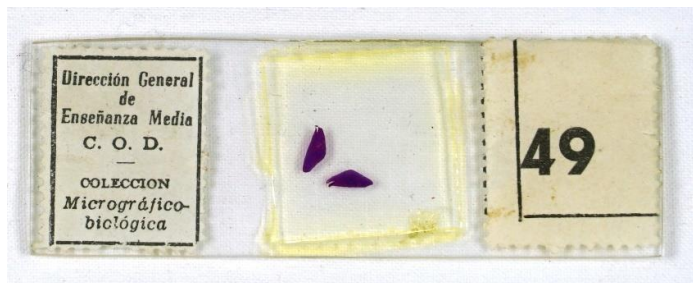
Riñón (Formol Urano)



Tiroides, paratiroides y tráquea



Cápsulas suprarrenales

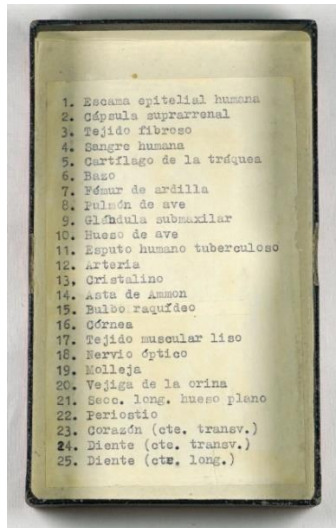


Bazo



Corazón

Caja 3



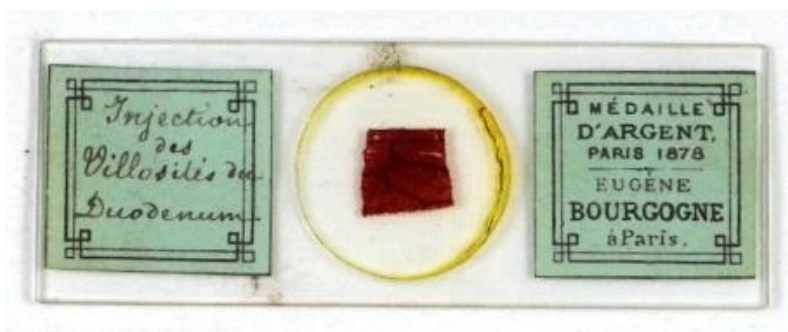
Dimensiones: 15 x 9 x 4 cm

Los portaobjetos tienen unas dimensiones de 7,5 x 2,7 cm, salvo los que se indique expresamente sus medidas



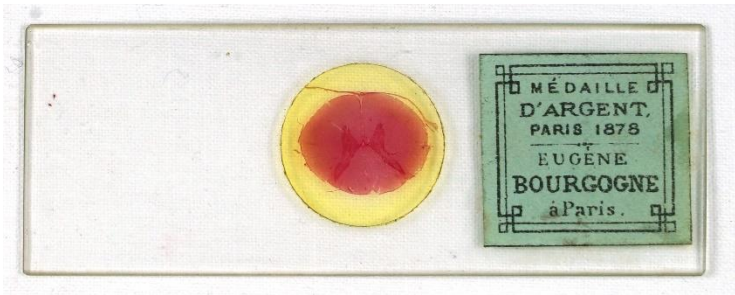


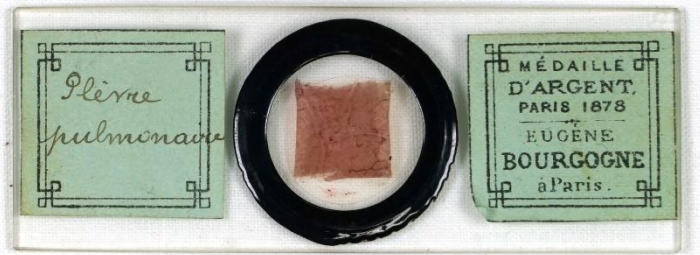
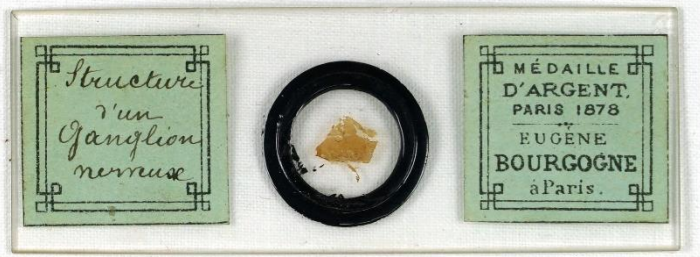
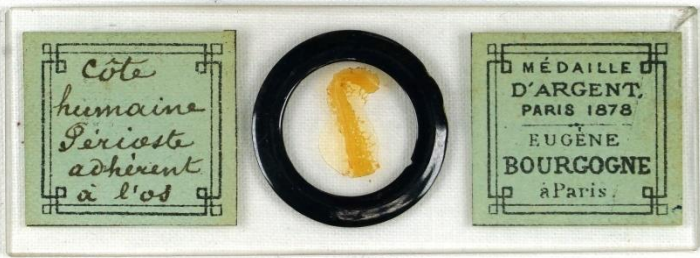
Dimensiones: 6 x 2 cm

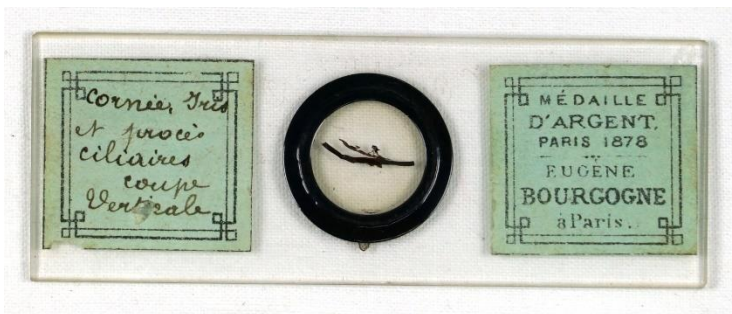
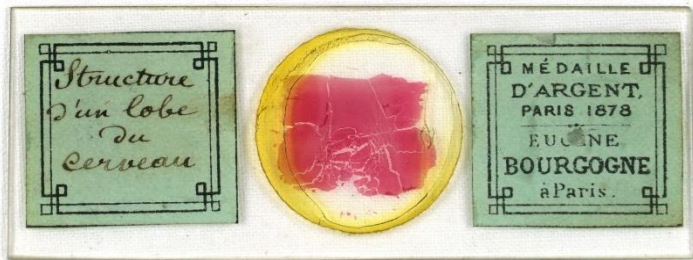


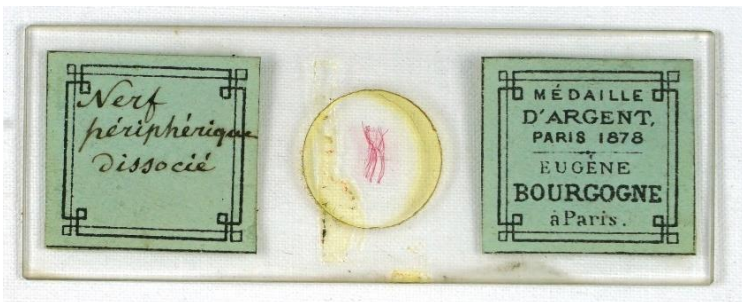
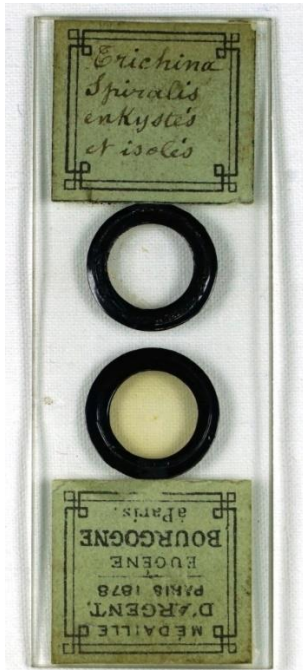


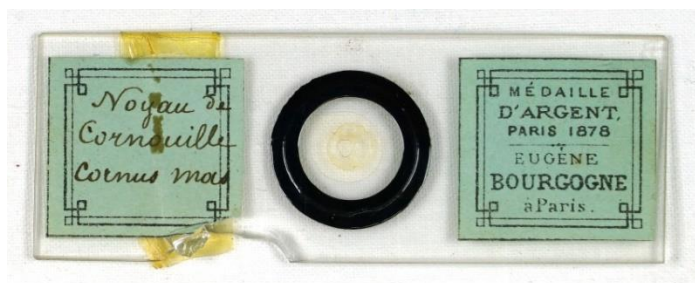


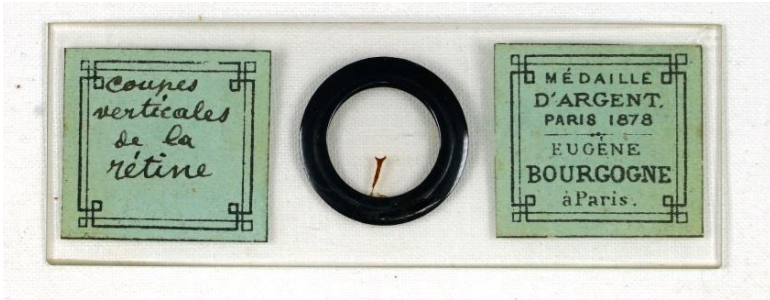




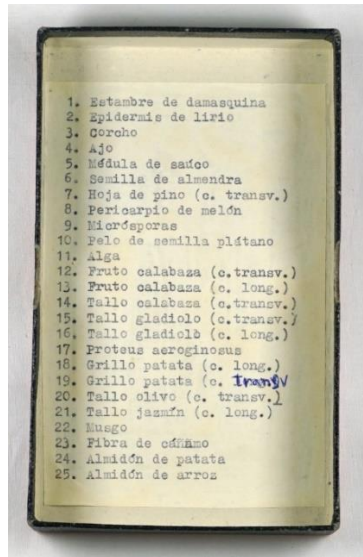








Caja 4

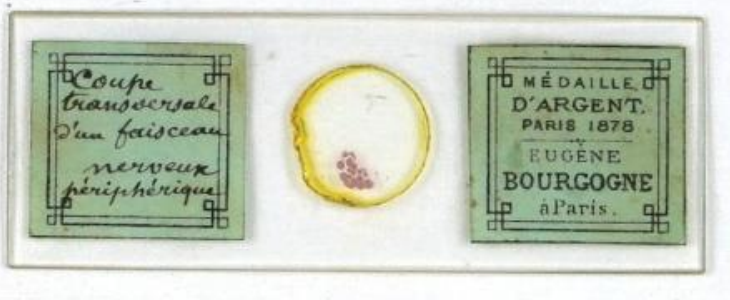


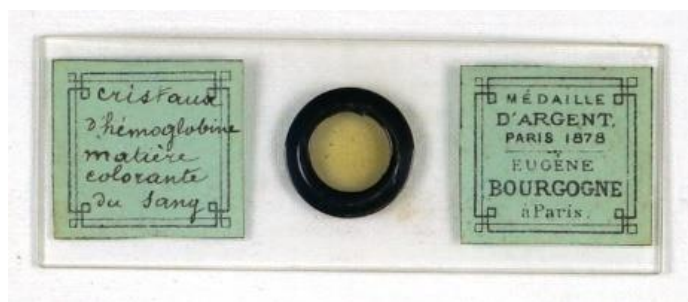
Dimensiones: 15 x 9 x 4 cm

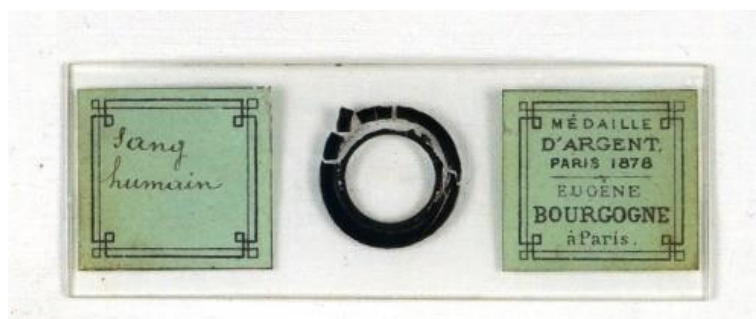
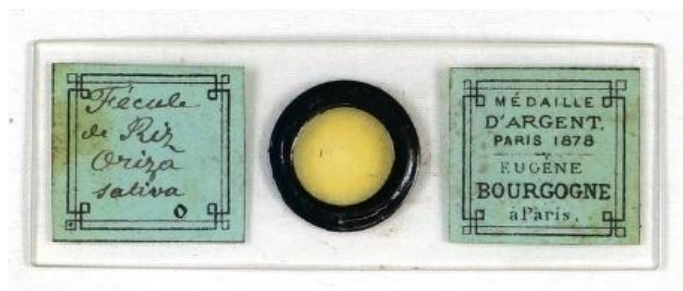
Los portaobjetos tienen unas dimensiones de 7,5 x 2,7 cm



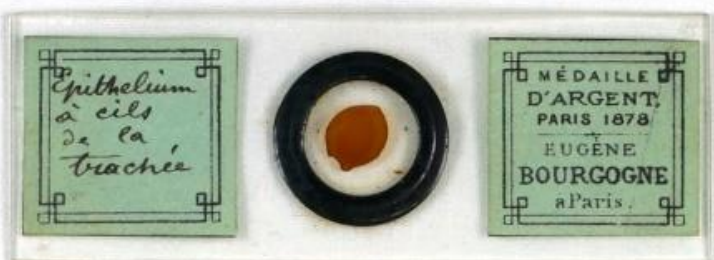
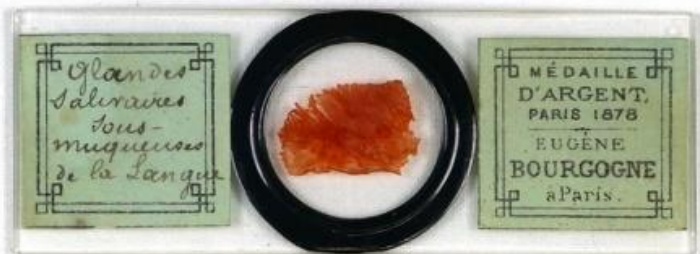


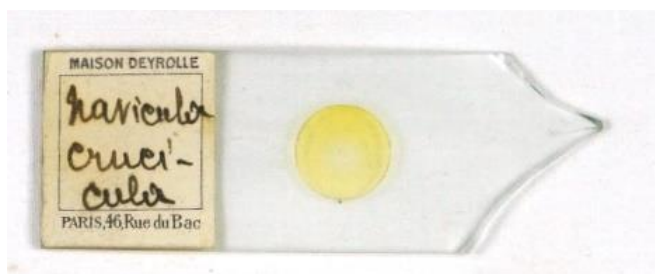










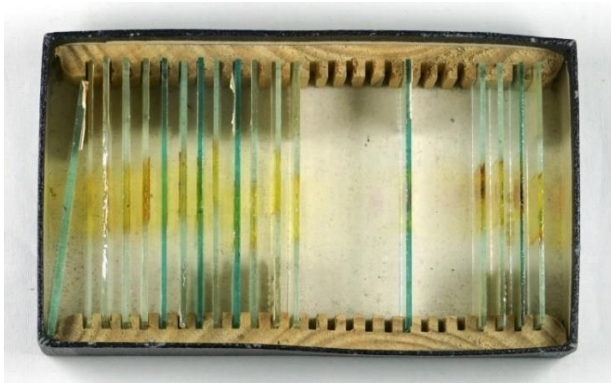


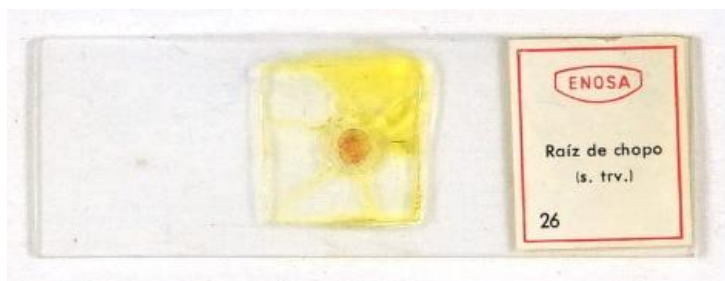
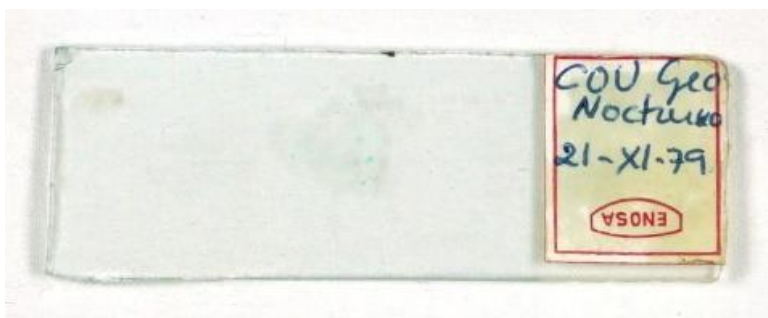
Caja 5



Dimensiones: 15,5 x 9,5 x 3 cm

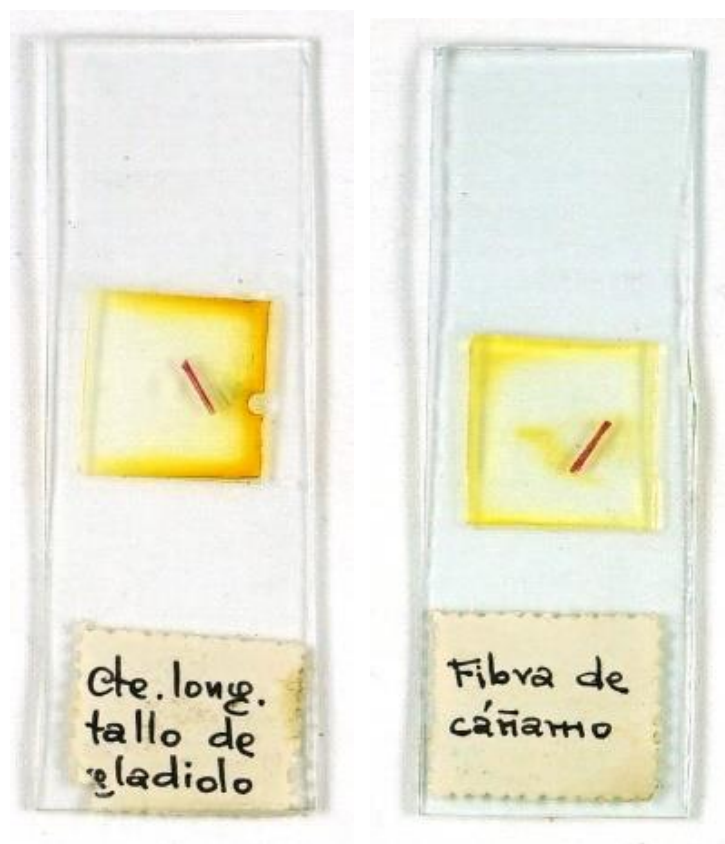
Los portaobjetos tienen unas dimensiones de 7,6 x 2,5 cm

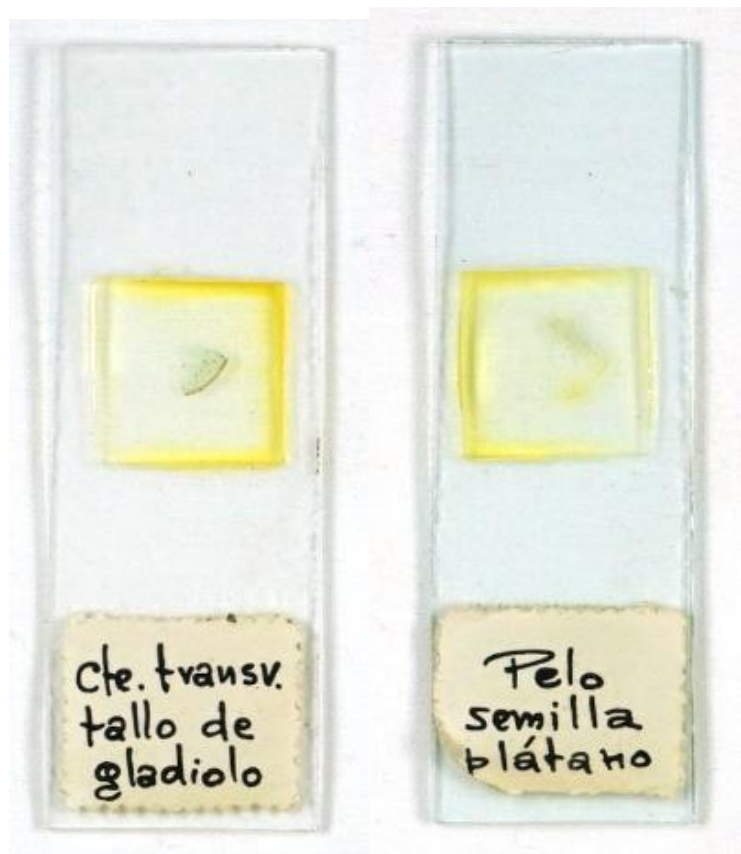




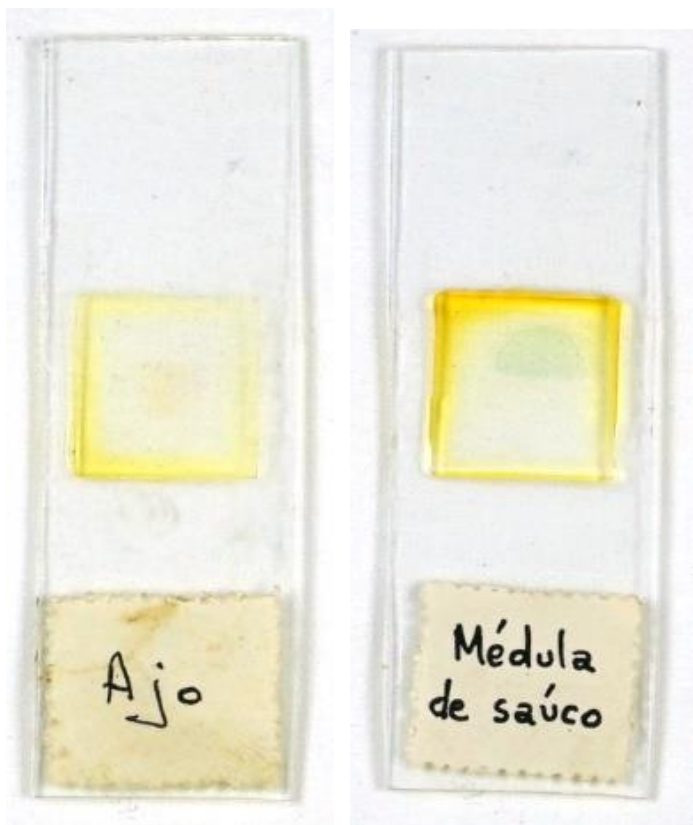




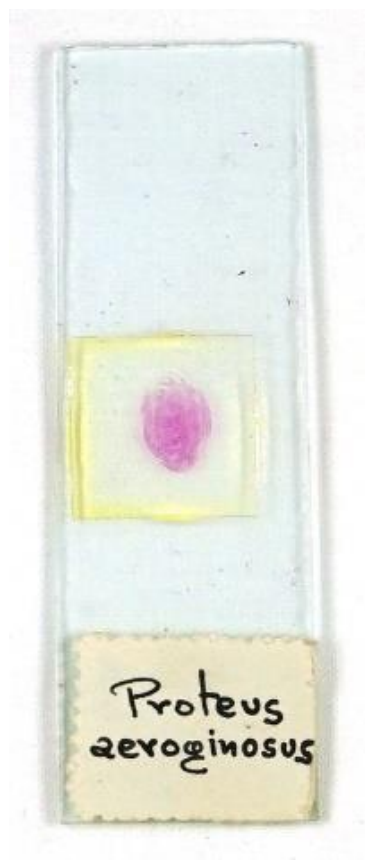
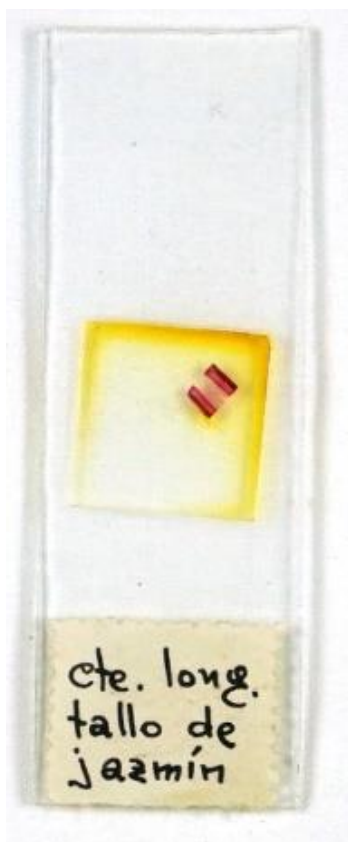












Caja 6



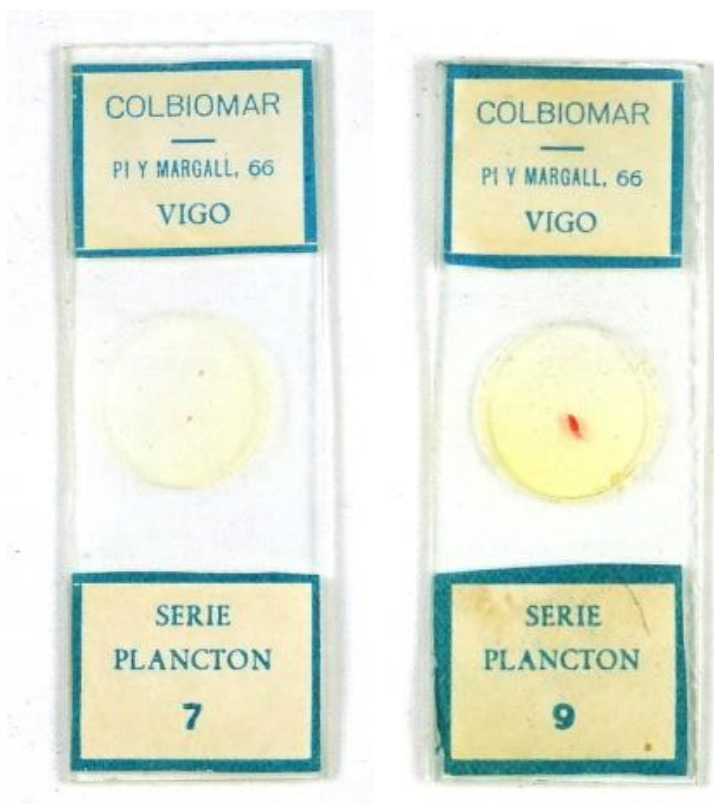
Dimensiones: 15,5 x 9,5 x 3 cm

Los portaobjetos tienen unas dimensiones de 7,5 x 2,7 cm







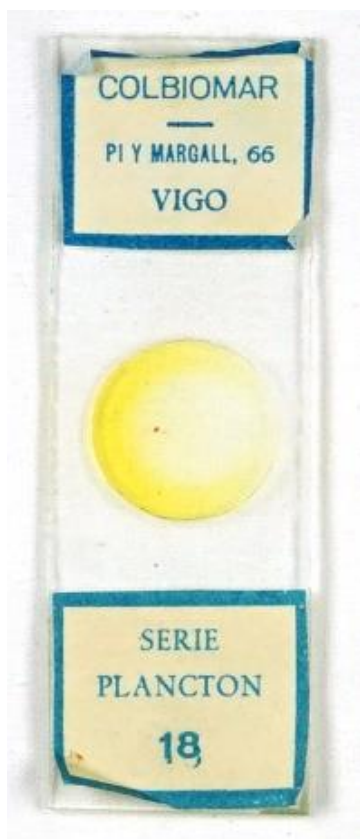


















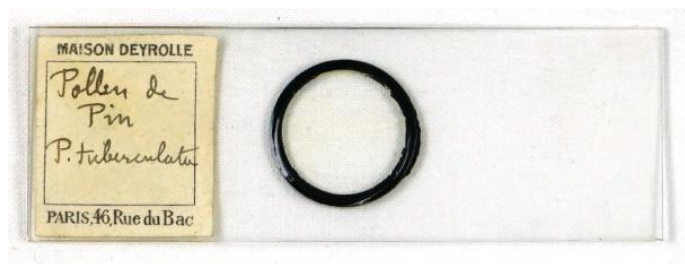
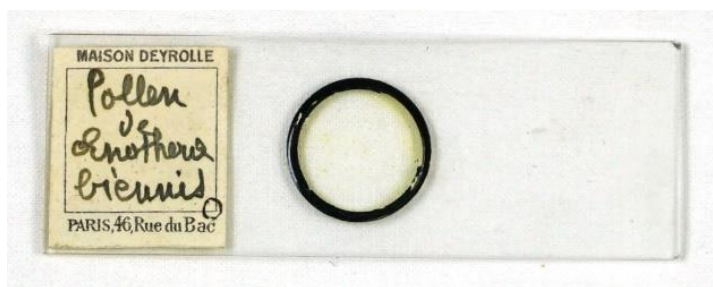
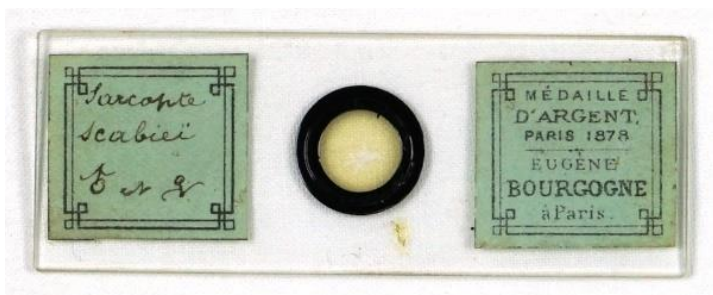
Caja 7

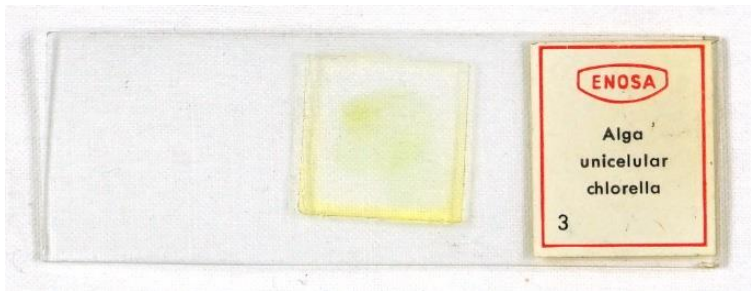


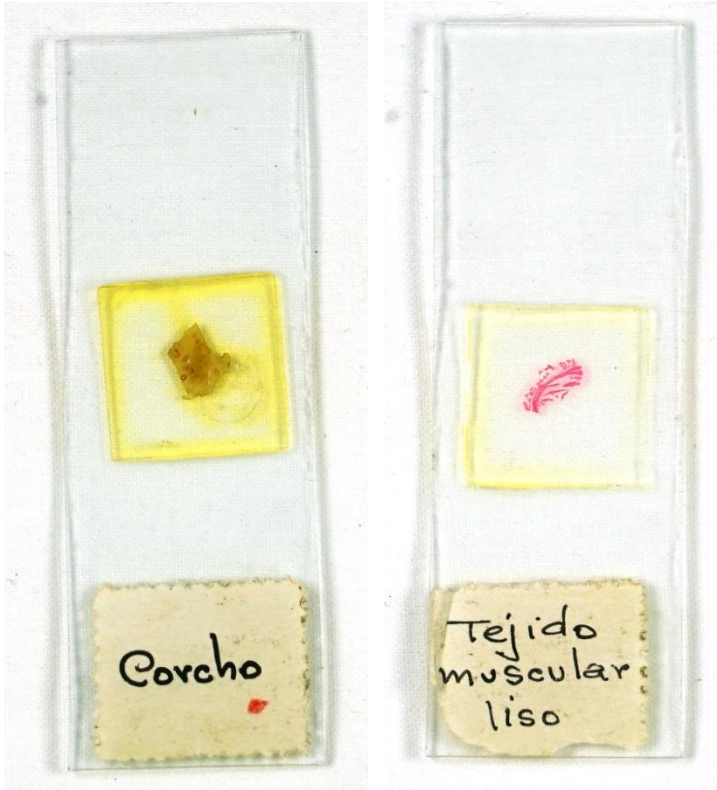
Dimensiones: 10 x 7 x 3,5 cm

Los portaobjetos tienen unas dimensiones de 7,5 x 3 cm

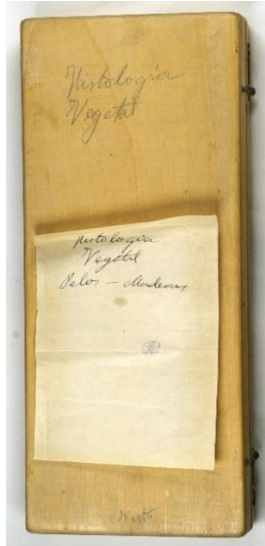








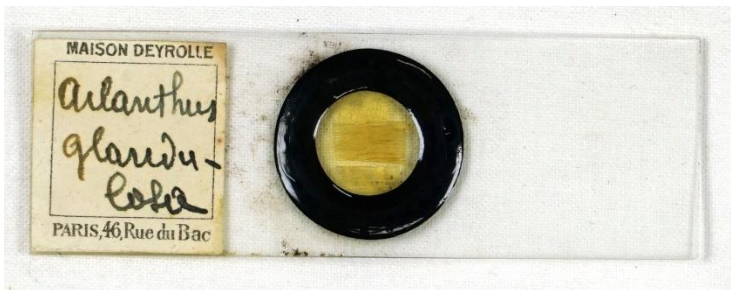
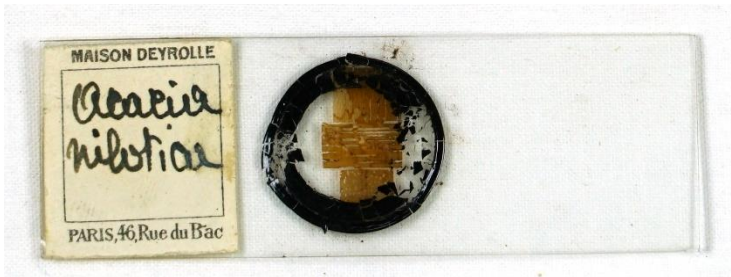
Caja 8

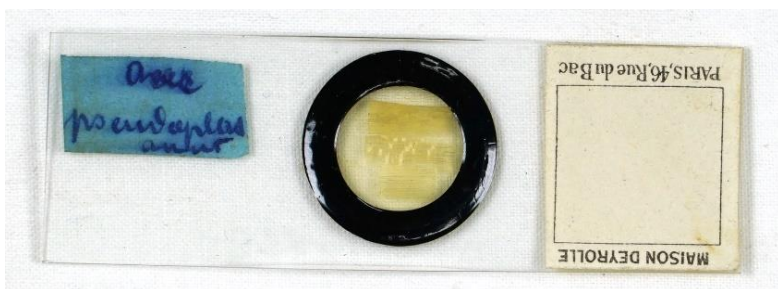
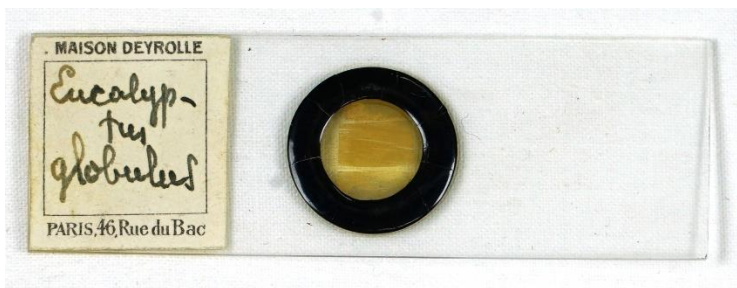


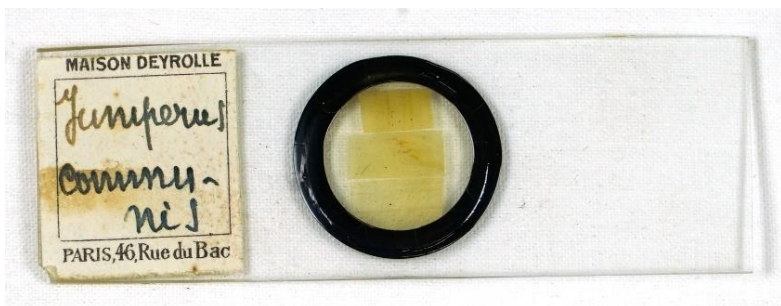
Dimensiones: 23,5 x 10 x 4 cm

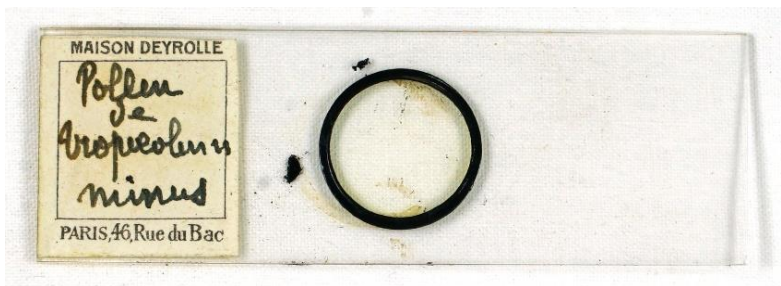
Los portaobjetos tienen unas dimensiones de 7,5 x 2,8 cm



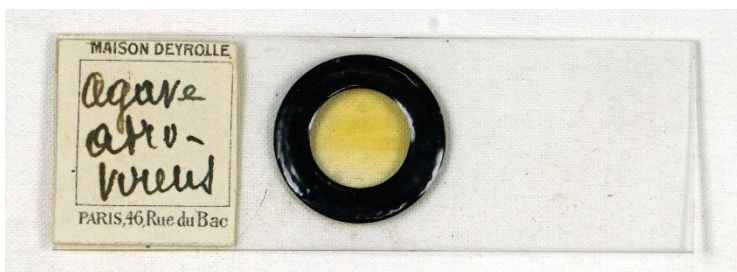
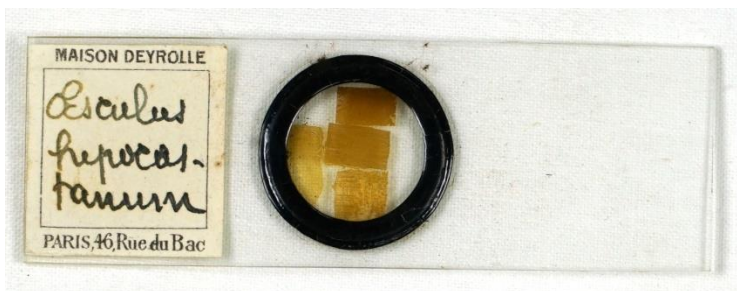
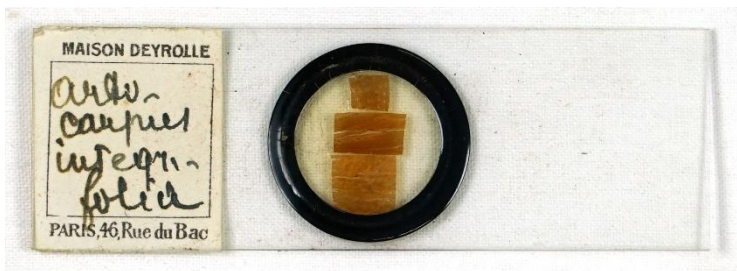


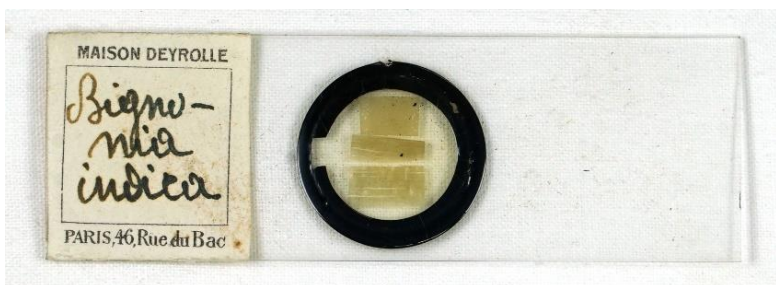
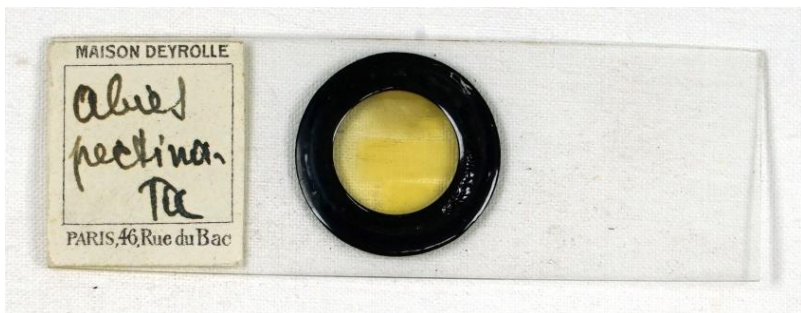
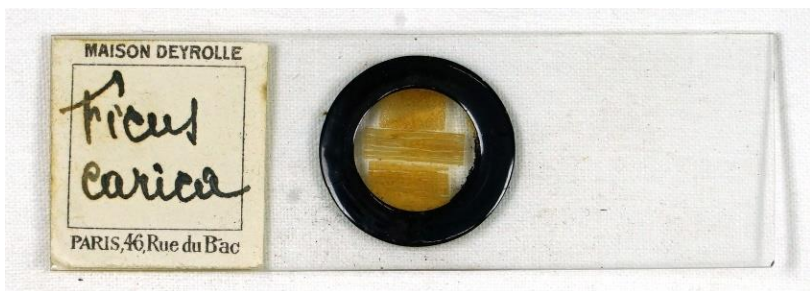


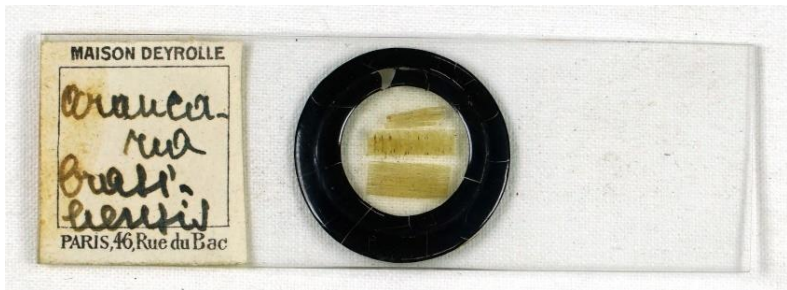
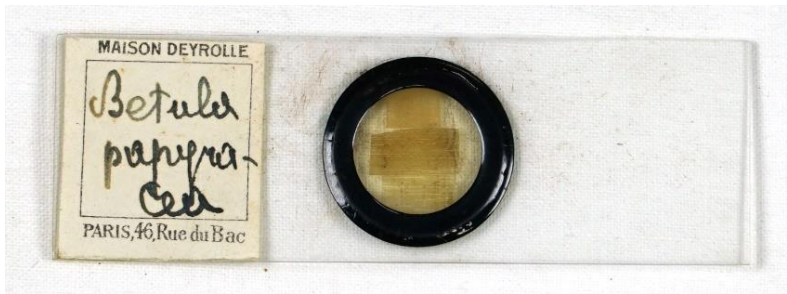


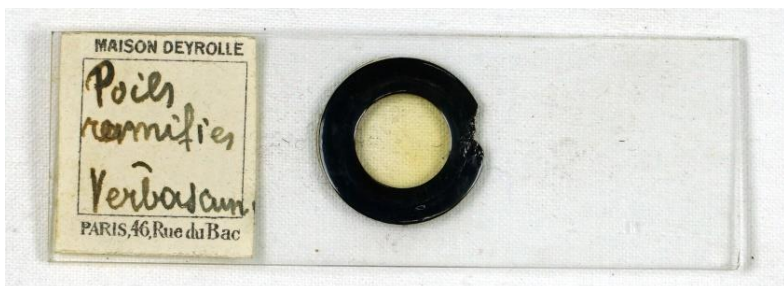
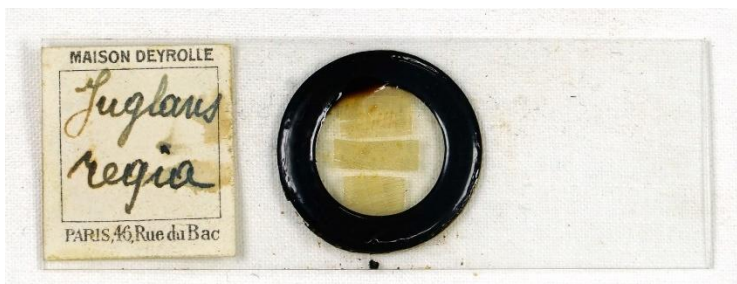


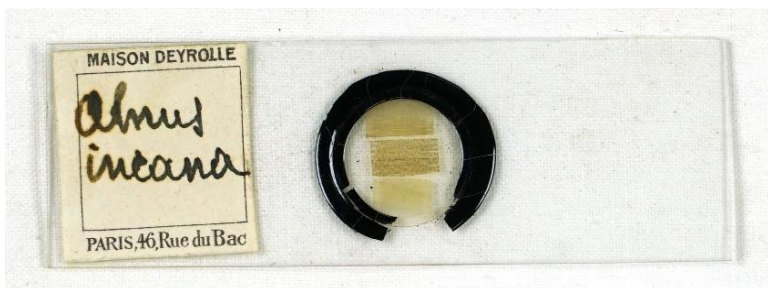
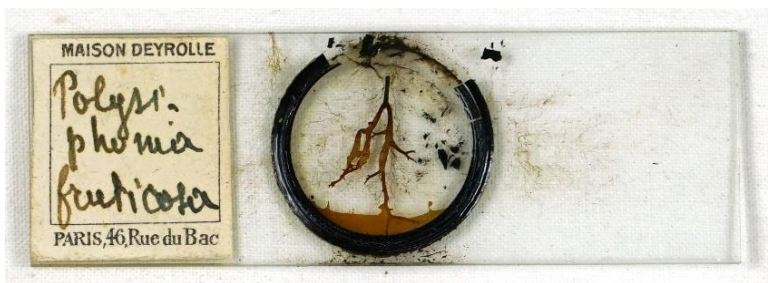


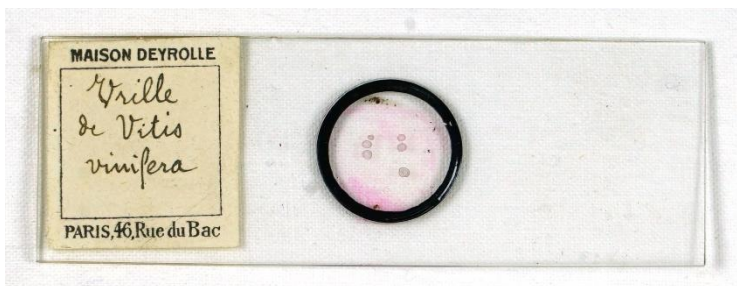


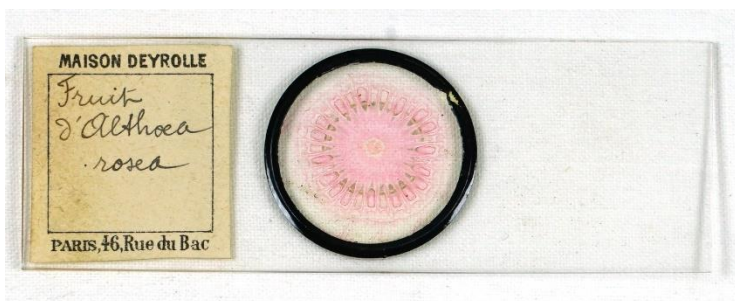
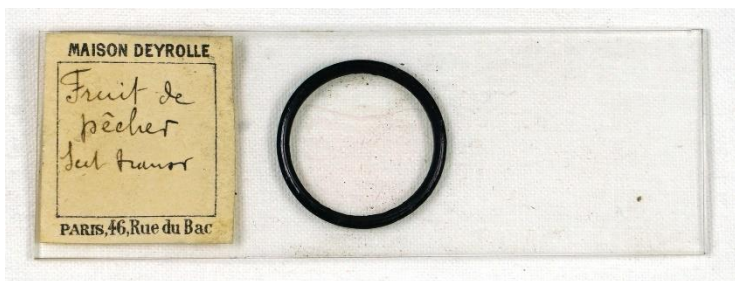


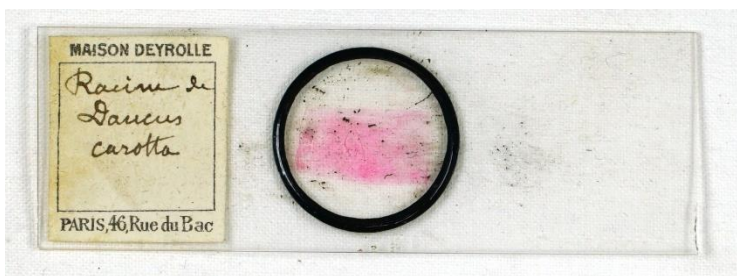


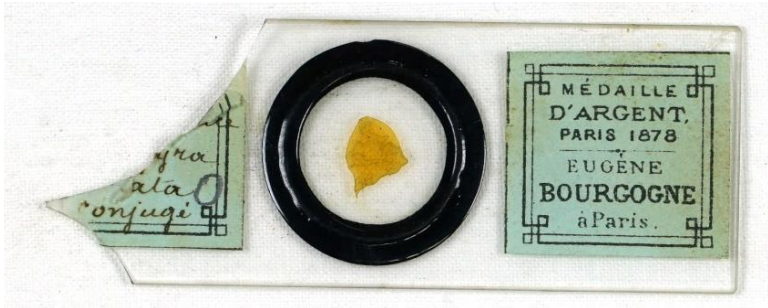












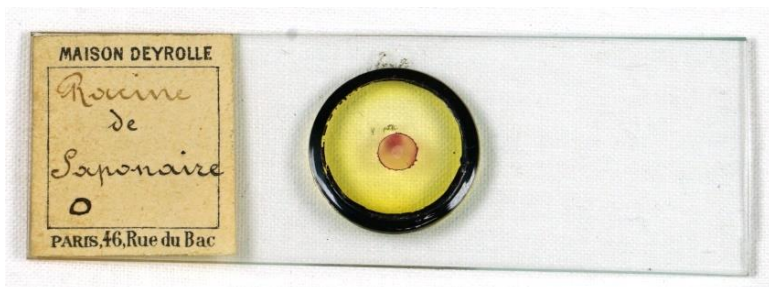
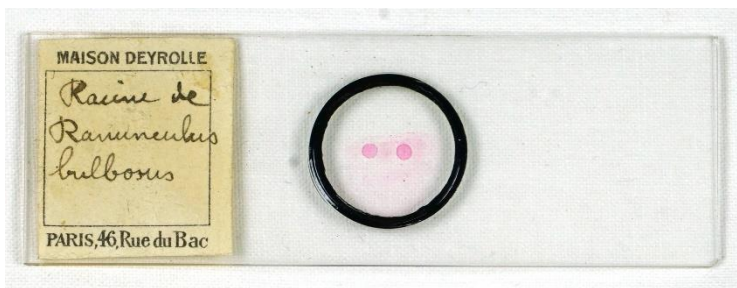
Caja 9

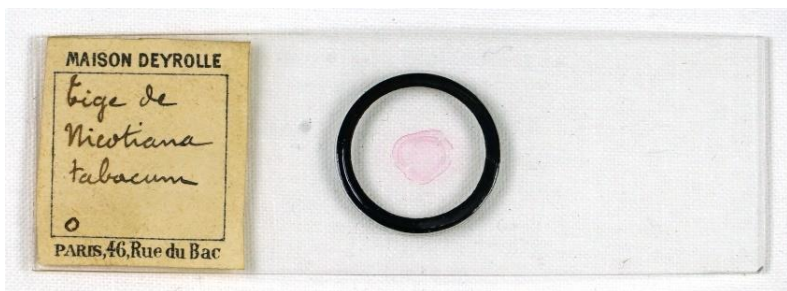


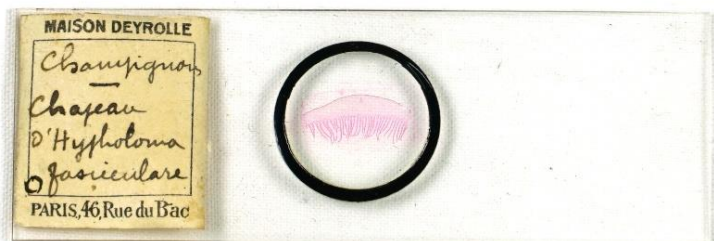
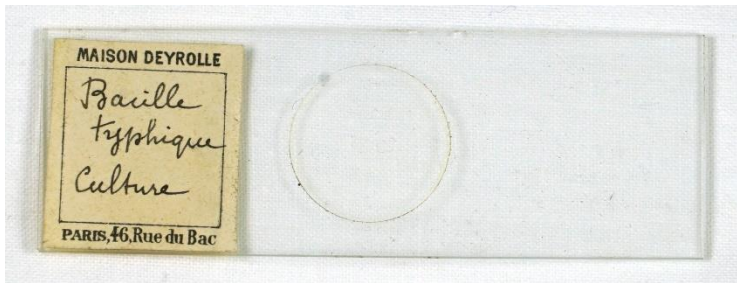
Dimensiones: 23,5 x 10 x 4 cm

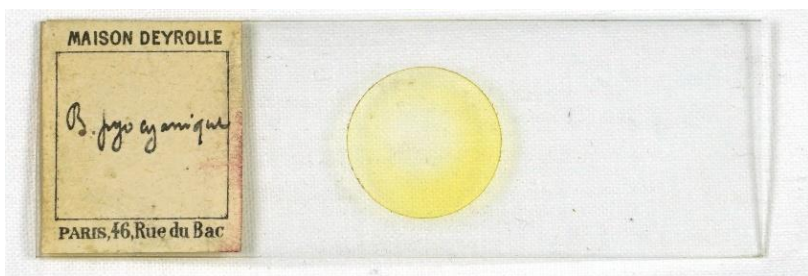
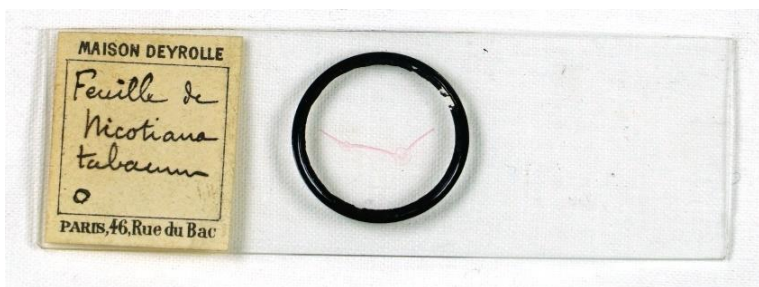
Los portaobjetos tienen unas dimensiones de 7,5 x 2,8 cm

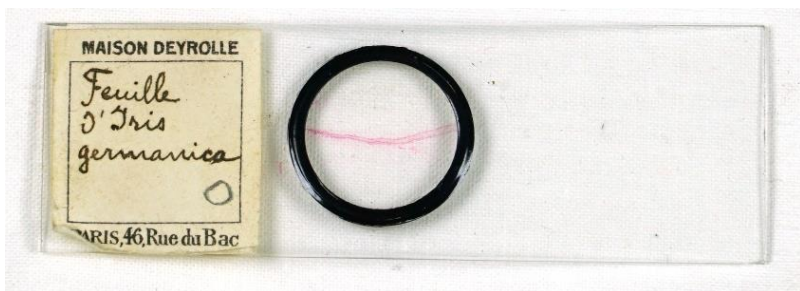


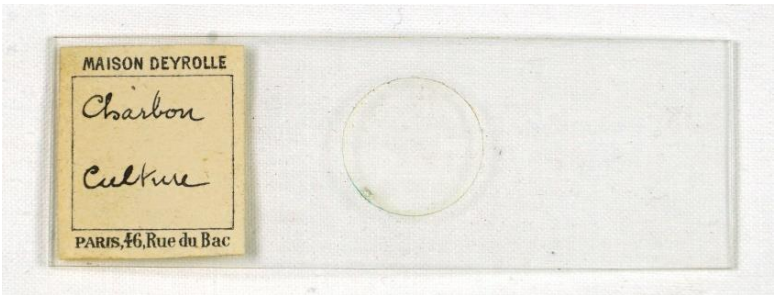


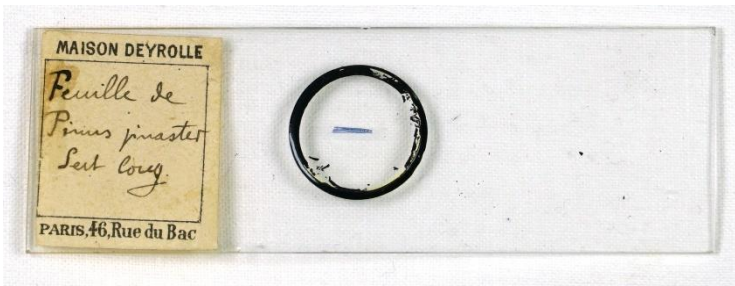


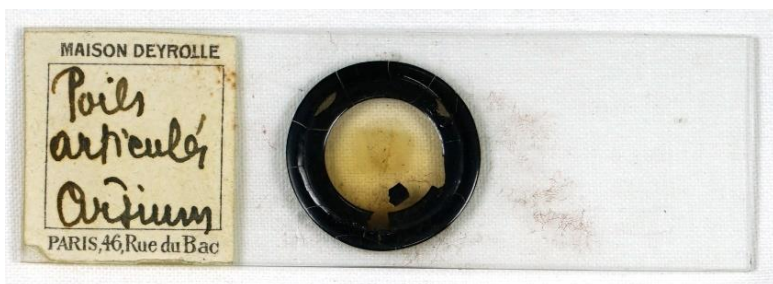
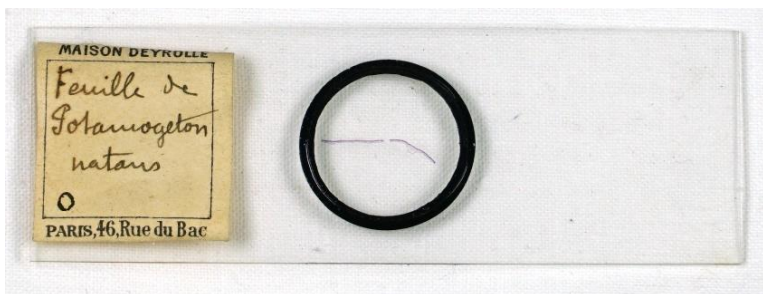


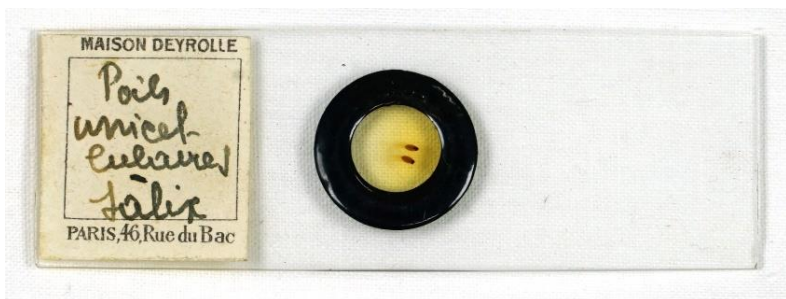
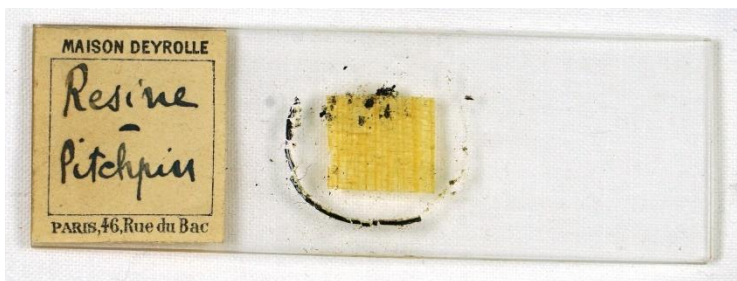


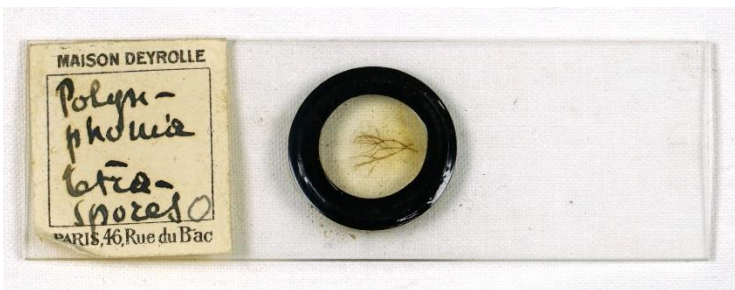
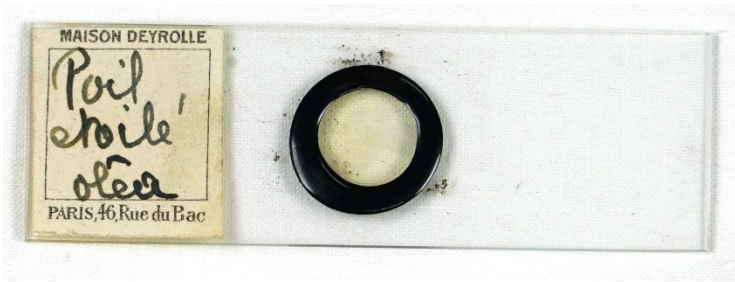


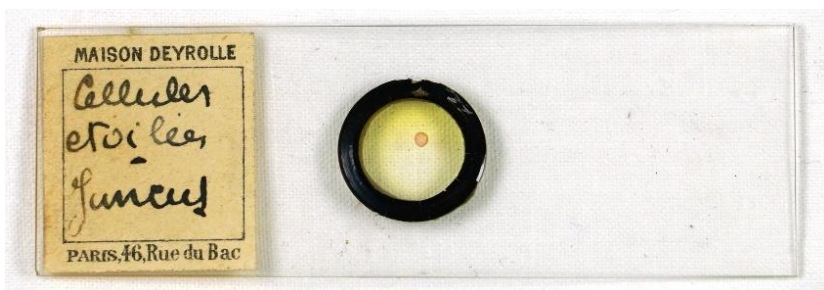
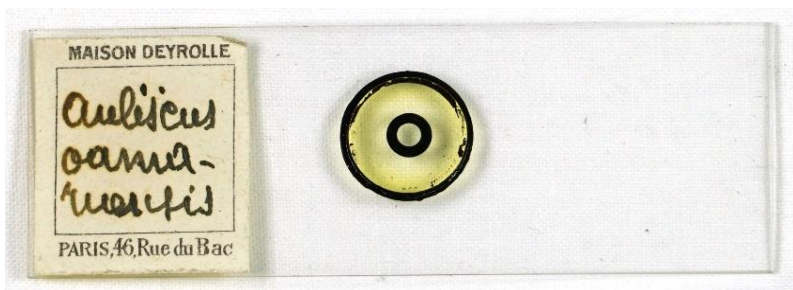
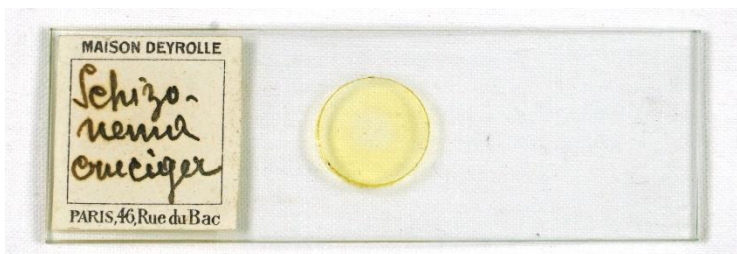


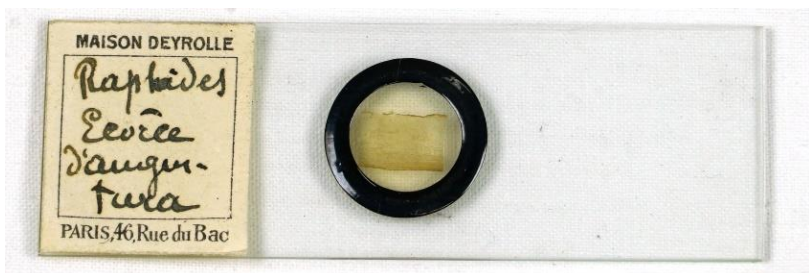
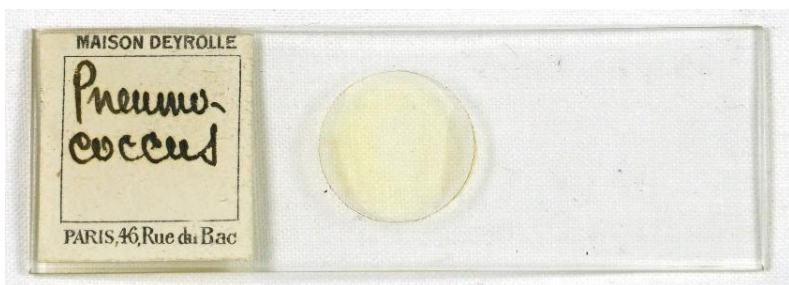


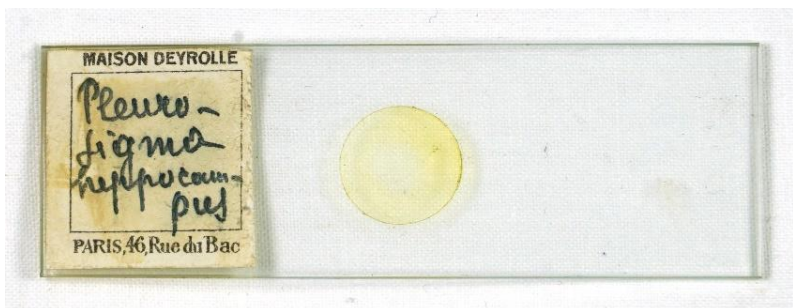














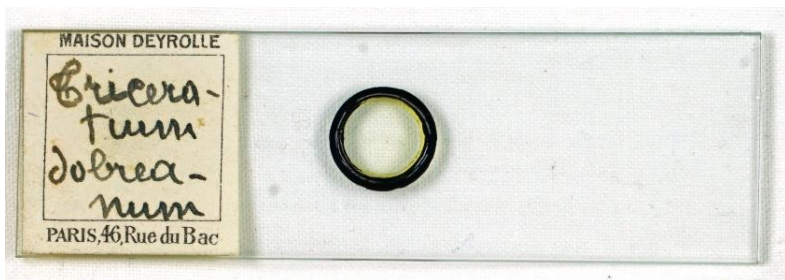
Caja 10

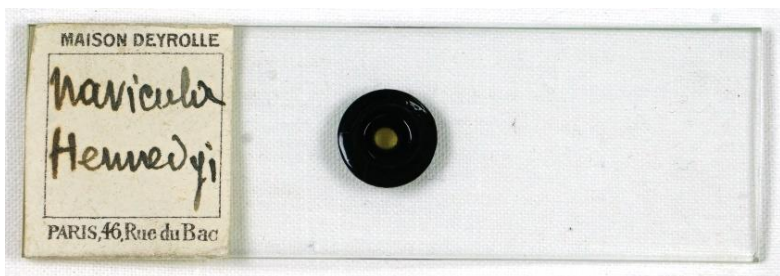
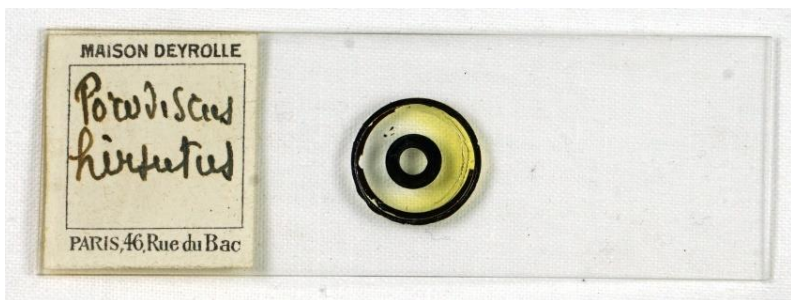


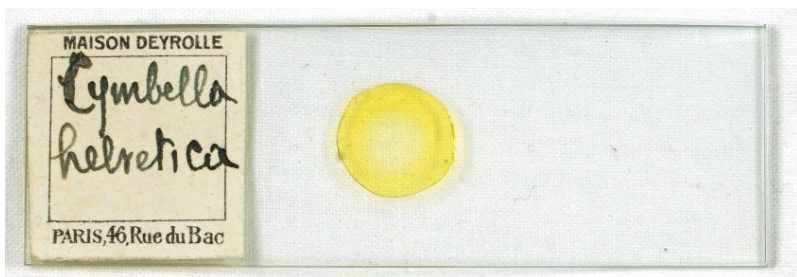
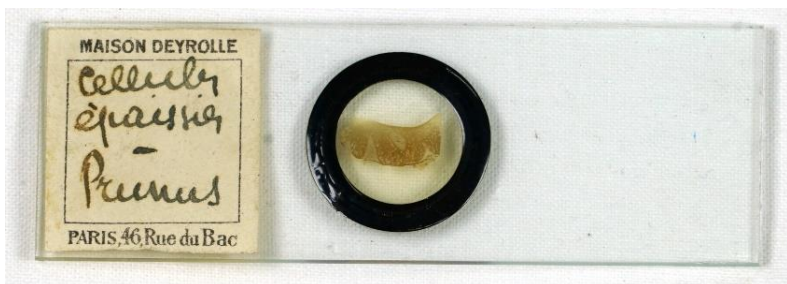
Dimensiones: 23,5 x 10 x 4 cm

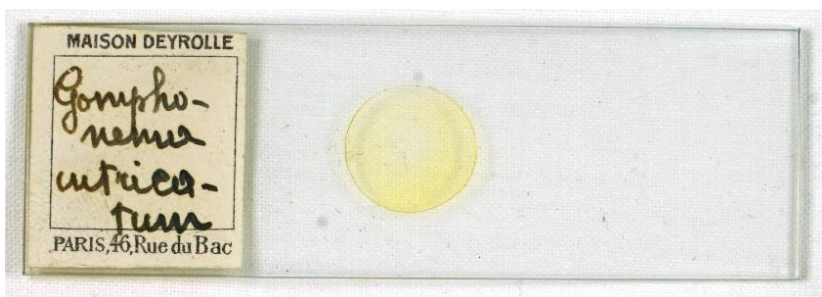
Los portaobjetos tienen unas dimensiones de 7,5 x 2,8 cm

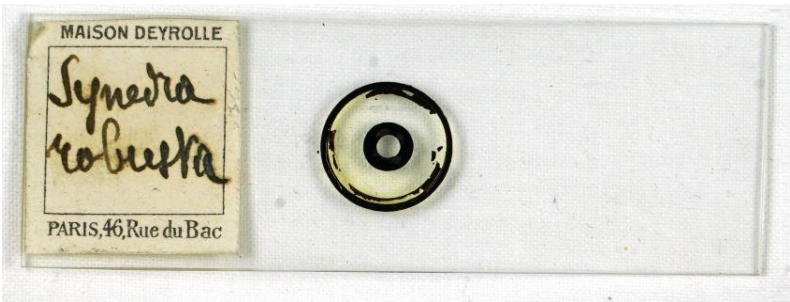
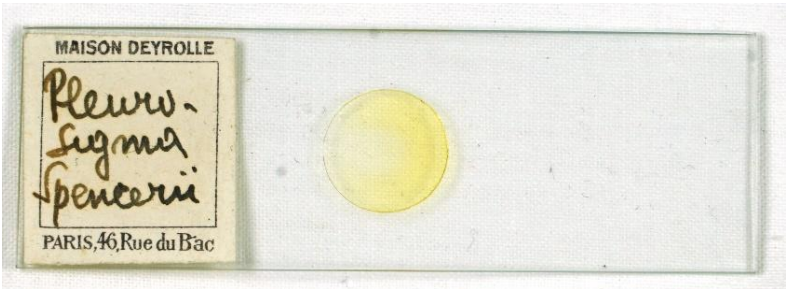
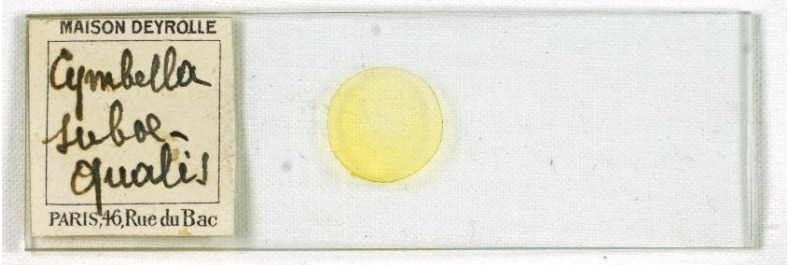


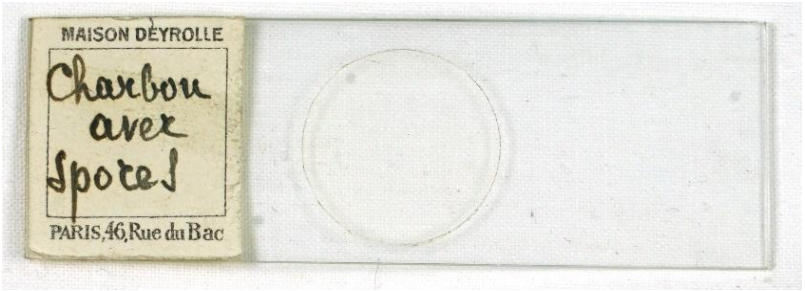


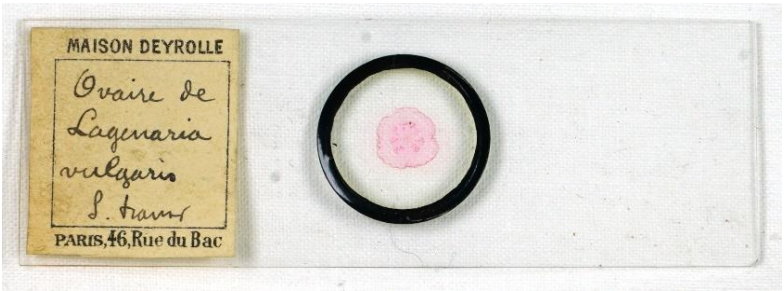
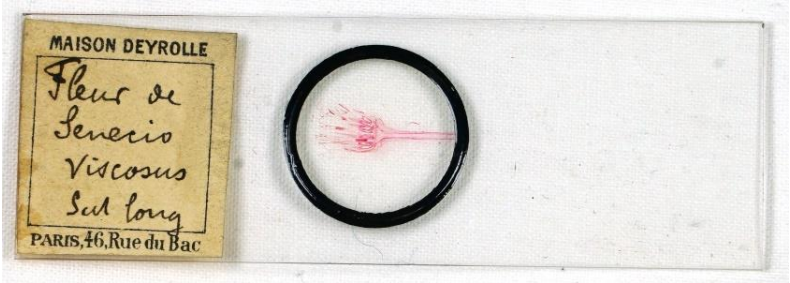


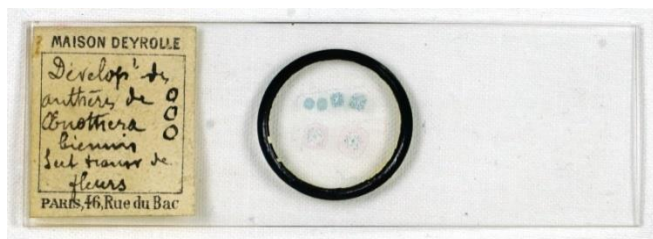
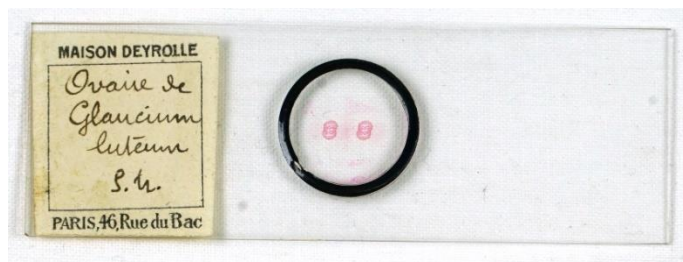
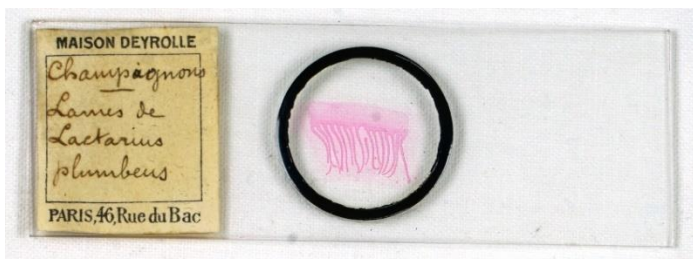


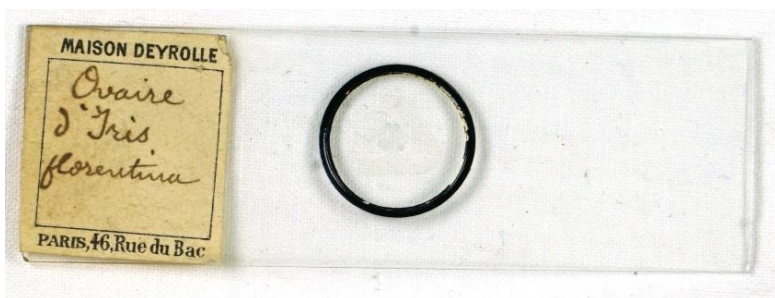
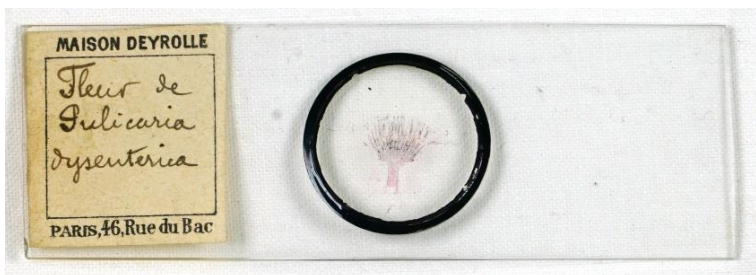












Caja 11

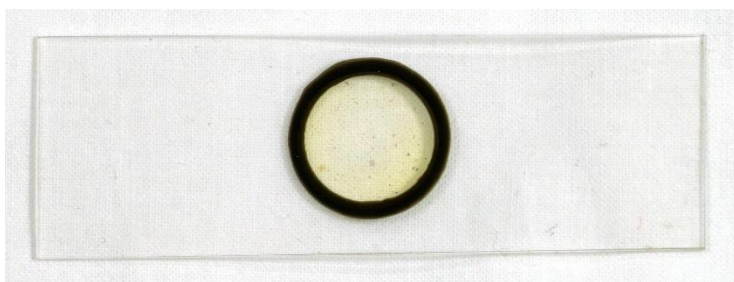
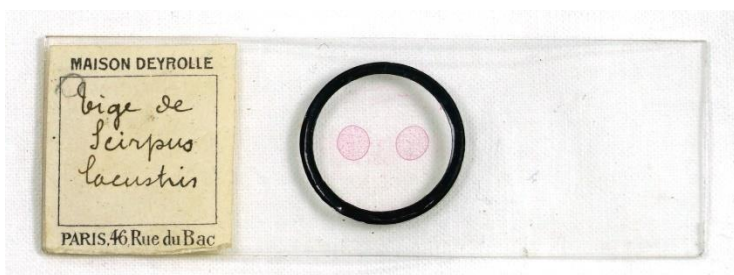


Dimensiones: 24 x 10 x 4 cm

Los portaobjetos tienen unas dimensiones de 7,5 x 2,5 cm

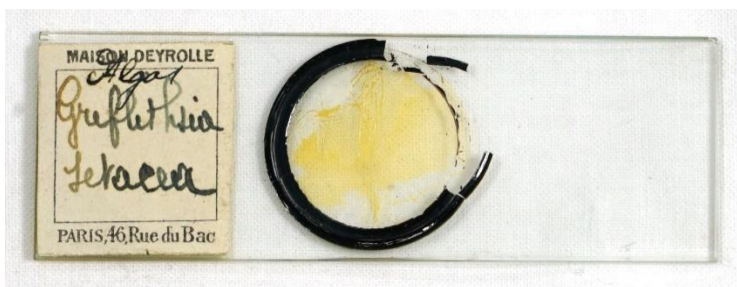


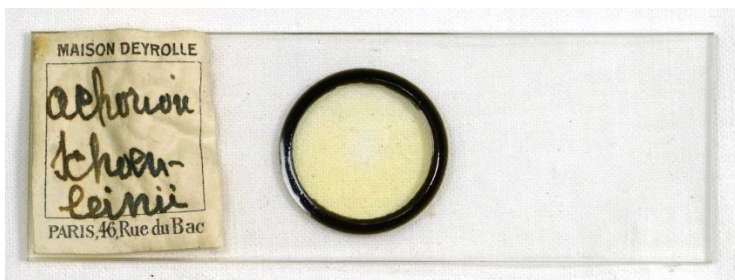
















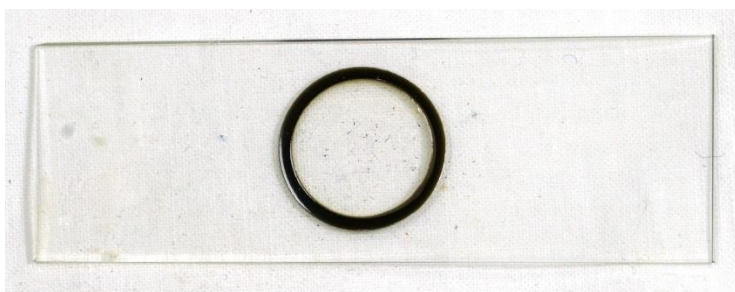












Laboratorio

Caja 1

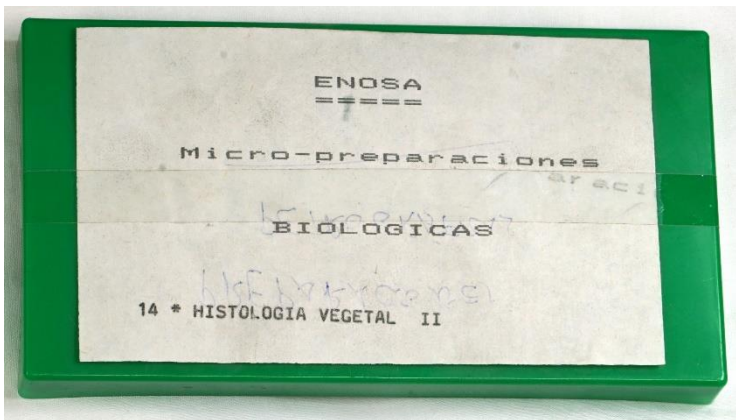


7,7 x 2,6 cm



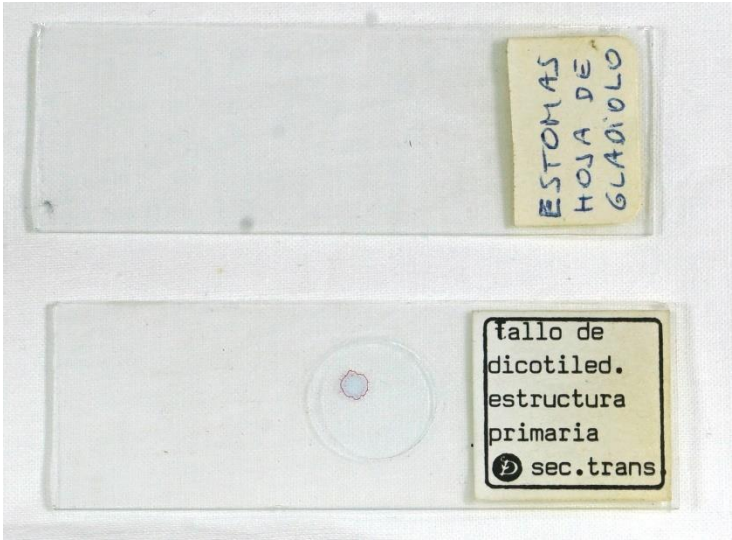
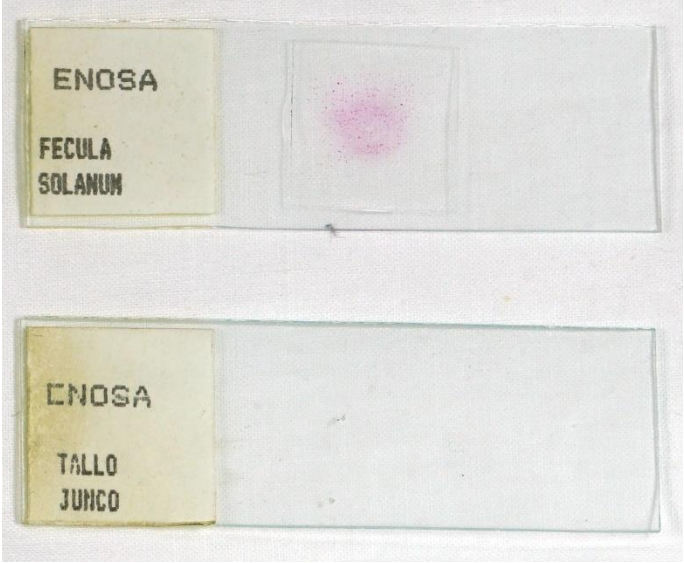
7,6 x 2,7 cm

Caja 3

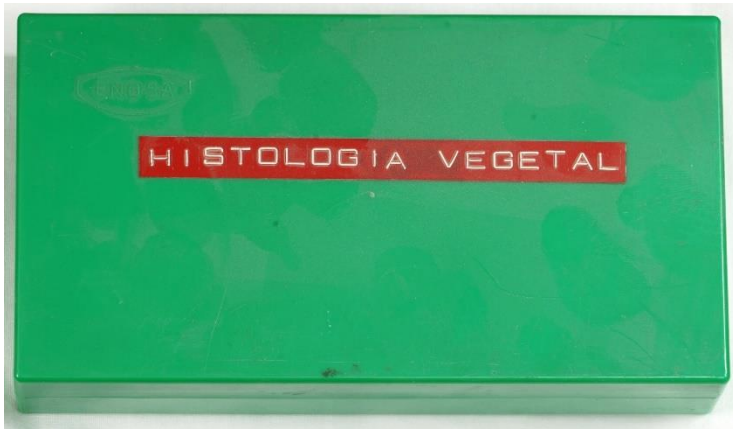


Dimensiones: 16 x 8,5 x 3 cm

Los portaobjetos tienen unas dimensiones de 7,8 x 2,5 cm

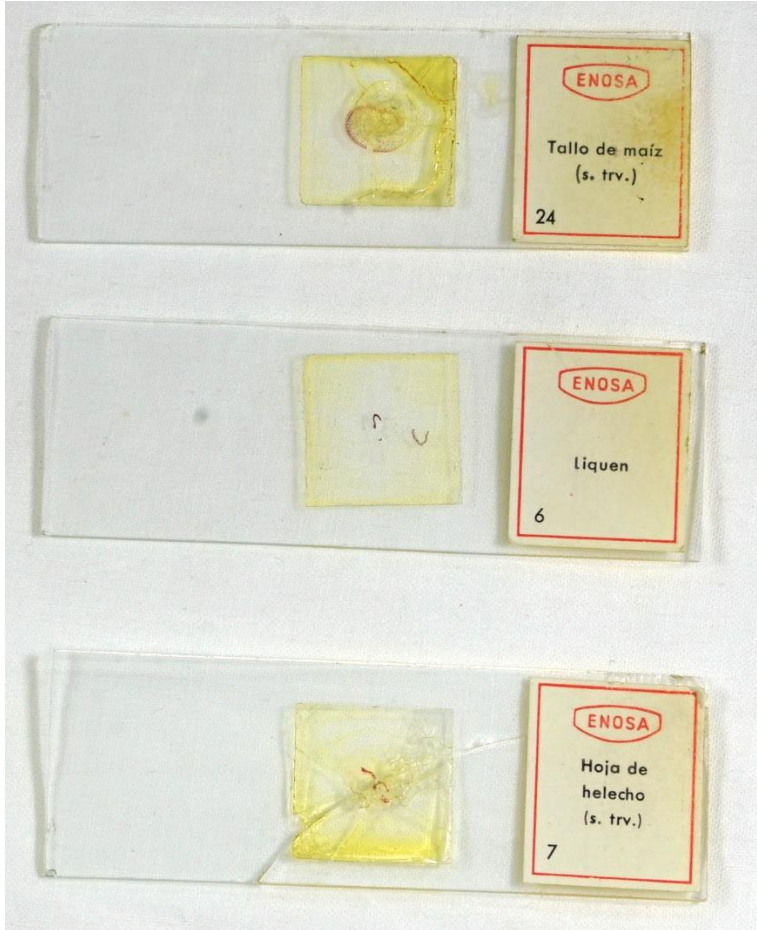


Caja 4



Dimensiones: 16 x 8,5 x 3 cm

Los portaobjetos tienen unas dimensiones de 7,6 x 2,7 cm







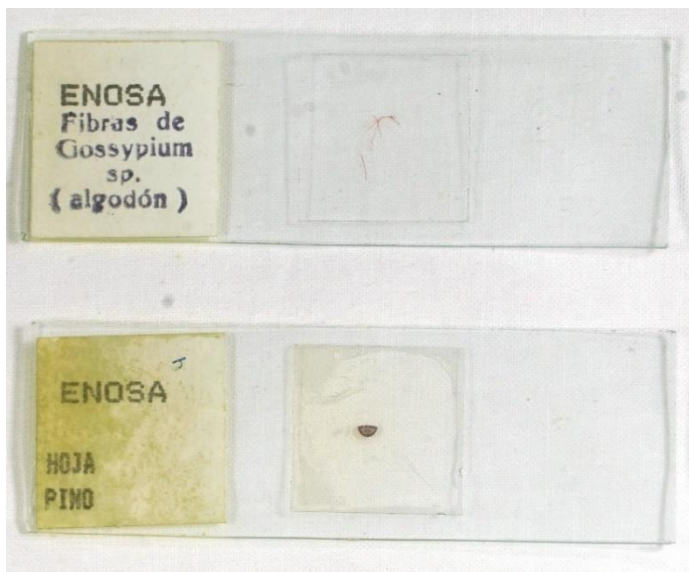


Caja 5



Dimensiones: 13,5 x 8,5 x 3 cm

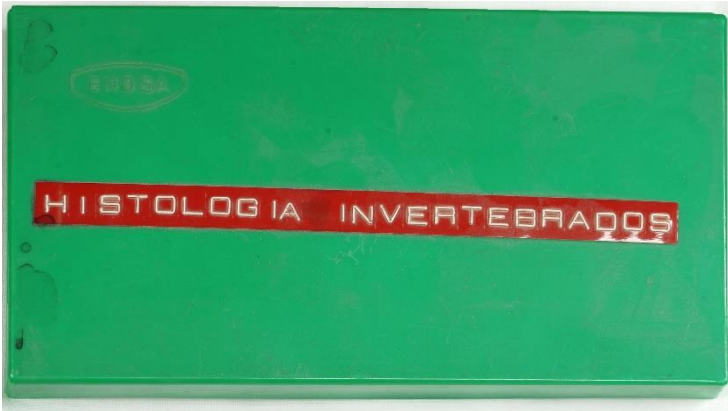
Los portaobjetos tienen unas dimensiones de 7,6 x 2,7 cm







Caja 6



Dimensiones: 16 x 8,5 x 3 cm

Los portaobjetos tienen unas dimensiones de 7,6 x 2,7 cm















Caja 7

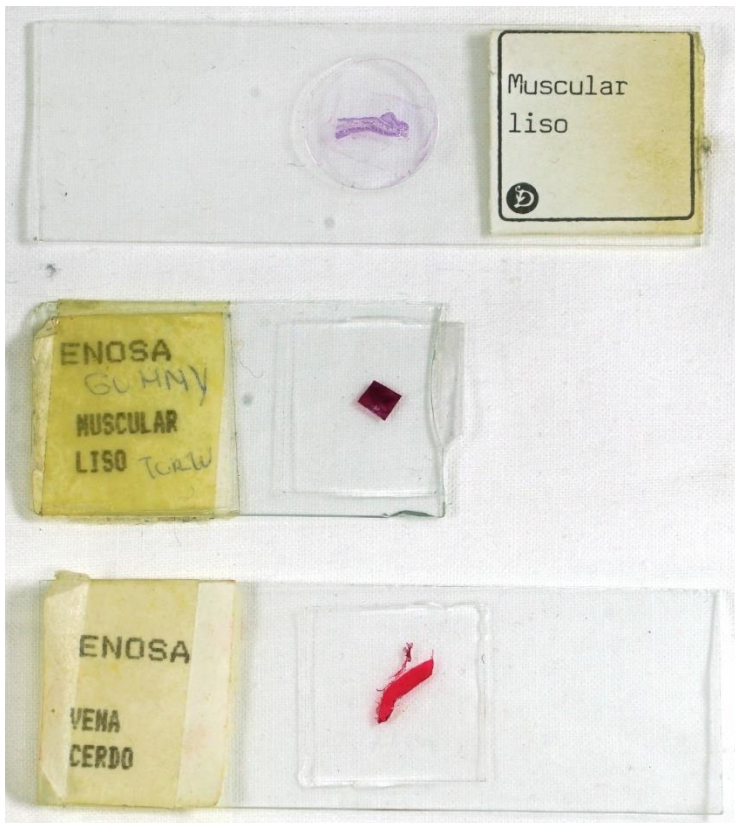


Dimensiones: 16 x 8,5 x 3 cm

Los portaobjetos tienen unas dimensiones de 7,6 x 2,7 cm



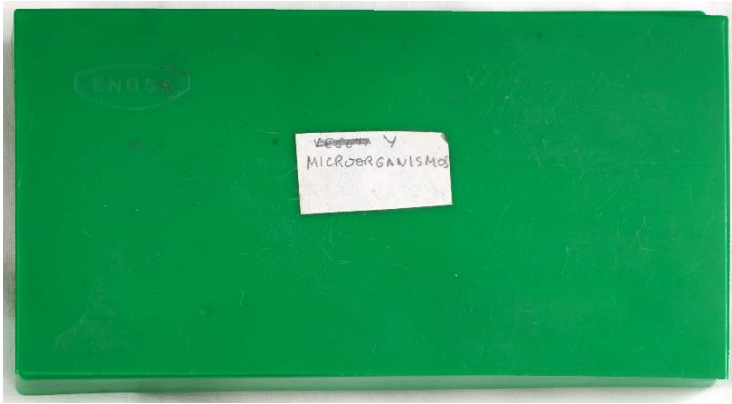








Caja 8



Dimensiones: 16 x 8,5 x 3 cm

Los portaobjetos tienen unas dimensiones de 7,6 x 2,7 cm











Índice

Las colecciones osteológicas	3
IES Mariano Quintanilla	5
IES Andrés Laguna	81
Las colecciones micrográficas	90
IES Mariano Quintanilla	91
IES Andrés Laguna	152

the 1990s, the number of people in the world who are under 15 years of age is expected to increase from 1.1 billion to 1.5 billion. This increase is expected to be particularly large in the developing countries, where the population is growing rapidly.

The rapid increase in the number of people in the world who are under 15 years of age is expected to have a significant impact on the world's economy and society. In particular, the rapid increase in the number of people in the world who are under 15 years of age is expected to have a significant impact on the world's economy and society.

The rapid increase in the number of people in the world who are under 15 years of age is expected to have a significant impact on the world's economy and society. In particular, the rapid increase in the number of people in the world who are under 15 years of age is expected to have a significant impact on the world's economy and society.

The rapid increase in the number of people in the world who are under 15 years of age is expected to have a significant impact on the world's economy and society. In particular, the rapid increase in the number of people in the world who are under 15 years of age is expected to have a significant impact on the world's economy and society.

The rapid increase in the number of people in the world who are under 15 years of age is expected to have a significant impact on the world's economy and society. In particular, the rapid increase in the number of people in the world who are under 15 years of age is expected to have a significant impact on the world's economy and society.

The rapid increase in the number of people in the world who are under 15 years of age is expected to have a significant impact on the world's economy and society. In particular, the rapid increase in the number of people in the world who are under 15 years of age is expected to have a significant impact on the world's economy and society.

The rapid increase in the number of people in the world who are under 15 years of age is expected to have a significant impact on the world's economy and society. In particular, the rapid increase in the number of people in the world who are under 15 years of age is expected to have a significant impact on the world's economy and society.

The rapid increase in the number of people in the world who are under 15 years of age is expected to have a significant impact on the world's economy and society. In particular, the rapid increase in the number of people in the world who are under 15 years of age is expected to have a significant impact on the world's economy and society.

The rapid increase in the number of people in the world who are under 15 years of age is expected to have a significant impact on the world's economy and society. In particular, the rapid increase in the number of people in the world who are under 15 years of age is expected to have a significant impact on the world's economy and society.